

# Recommended Retail Price List



20  
13

Satelec UK Ltd trading as Acteon UK

Unit 1 - 3 • Steel Close • Eaton Socon • St Neots • Cambs • PE19 8TT

Tel +44 (0) 1480 477307 • Fax +44 (0) 1480 477381

Email: [info@acteongroup.co.uk](mailto:info@acteongroup.co.uk) or [sales@acteongroup.co.uk](mailto:sales@acteongroup.co.uk)

[www.acteongroup.com](http://www.acteongroup.com) / [www.acteonuk.co.uk](http://www.acteonuk.co.uk)

**ACTEON**  
UNITED KINGDOM

## IMPORTANT.

This is a non contractual document - Copyright © 2013 Satelec  
All rights reserved.

No information or part of this document may be reproduced or transmitted in any form without the prior permission of Acteon UK.

The manufacturer reserves the right to modify this document without prior notice.

Satelec's liability - both legal and with regards to warranty of parts and accessories:

The use of non-genuine or manufacturer approved parts and accessories may cause irreparable damage and will effect the warranty on your equipment.

Warranty is given on parts only. For further details regarding warranty please see our terms and conditions.

# LIST OF CONTENTS



Prophylaxis

5-10



Instruments for Prophylaxis  
Accessories, Spare parts and Tips

11-18



Implantology and Surgery  
Instruments and Accessories

19-30



Implant Motors / I-Endo

31-36



Polishers

37-42



Curing Lights

43-50



Sterilization

51-54



Intra-oral cameras

55-62



Digital X-Ray / PSPix Scanner

63-68



Intra-oral X-Ray

69-72



Veterinary Equipment

73-76



Scanners and OPC's

77-82



Pierre Rolland Consumables

83-88



Acteon UK Contact Information

89-92



Apical Surgery Tips

# TIPPED FOR SUCCESS

Extremely versatile ultrasonic and irrigation products for endodontic treatments.



P5 Newtron XS with LED

## P5 Newtron Range

Our complete series of ultrasonic generators are available with or without self-contained irrigation and LED light. Other options include the Sterikit and a wide selection of tips. (Free CD-ROM Tip Book is available on request)



Irrisafe Tip



Endo Success Tips



For further information:  
**01480 477307**

info@acteongroup.co.uk | sales@acteongroup.co.uk | www.acteongroup.com

We to create





# Prophylaxis



# P5 NEWTRON



## P5 NEWTRON

for scaling, endodontics periodontic and more.  
Ultrasonic generator.

F 58 360 £1,009.00

P5 Newrtron unit with autoclavable Newtron handpiece for all ultrasonic treatments complete with, handpiece cord, 1 tip 1 x no.1S, autoclavable wrench, single pedal.

Min. vibration frequency : 28 - 36 kHz

External dimensions : 150 x 80 x 170 mm  
(W x H x D) Weight : 1.380 g

## ACCESSORIES

F 12 281 £380.00

SP Newtron handpiece



F 00 061 £45.00

Single pedal (installation by qualified engineer only)



# P5 NEWTRON LED



## P5 NEWTRON LED

for scaling, endodontics periodontic and more.  
Ultrasonic generator with LED light

F 58 379 £1,533.00

P5 Newtron LED unit with Newtron LED light handpiece for all ultrasonic treatments, complete with LED handpiece cord,

1 x no. 1S tip, autoclavable wrench, single pedal.

Min. vibration frequency : 28 - 36 kHz

External dimensions : 150 x 80 x 170 mm  
(W x H x D) Weight : 1.610 g

## ACCESSORIES

F 12 609 £413.00

Newtron LED light handpiece

(100.000 Lux, cold light (6.000-7.000 °K))



F 12 605 £59.00

Light ring





### P5 NEWTRON XS

for scaling, endodontics, parodontics and more, with a self-contained irrigation system. Ultrasonic generator

F 58 138 £1,229.00

P5 XS unit with autoclavable Newtron handpiece for all ultrasonic treatments, complete with handpiece cord, 4 tips no. 1, no. 2, H3 and 10P, autoclavable wrench, single pedal, built-in power supply. Min. vibration frequency : 28 - 36 kHz

External dimensions : 158 x 125 x 290 mm (W x H x D) Weight : 1.700 g

### ACCESSORIES

F 58 136 £279.00

#### STERIKIT

with a metal base, Sterijoint adapter (F58703), autoclavable bracket, 5 clips, 3 universal disposable irrigation lines with integrated cassette



F 58 525 £55.00

Tank (300 ml) with cover



### P5 NEWTRON XS LED

for scaling, endodontics, parodontics and more, with a self-contained irrigation system Ultrasonic generator with LED light

F 58 223 £1,950.00

P5 XS LED unit with Newtron LED light handpiece for all ultrasonic treatments, complete with LED handpiece cord, 4 tips no. 1, no. 2, H3 and 10P, autoclavable wrench, single pedal. Min. vibration frequency : 28 - 36 kHz

External dimensions : 158 x 125 x 290 mm (W x H x D) Weight : 2.120 g

### ACCESSORIES

F 58 225 £279.00

#### STERIKIT LED

with a metal base, Sterijoint LED (F12640), autoclavable bracket, 3 universal disposable irrigation lines with integrated cassette



F 58 525 £55.00

Tank (300 ml) with cover





## SP NEWTRON OEM KITS

F 55 335 £851.00

### SP NEWTRON / LIGHT GREY CORD

Delivered with a light grey handpiece cord, an autoclavable Newtron handpiece, n.1, 10X and 10Z tips and a blue autoclavable box

F 55 337 £851.00

### SP NEWTRON / BELMONT CORD

As above with Belmont cord

F 55 455 £851.00

### SP NEWTRON TO FIT ADEC 500 UNIT

As above with an Adec SURF cord 61"

F 55 456 £851.00

### SP NEWTRON TO FIT ADEC 300 UNIT

As above with an Adec GREY cord 61"

## SP NEWTRON OEM MODULES ONLY

F 55 297 £489.00

SP Newtron Module (only) with connectors



F 55 287 £501.00

SP Newtron Module (only) for Adec 500

F 55 528 £501.00

SP Newtron LED Module (only)



## SP NEWTRON LED OEM KITS

F 55 500 £1,012.00

SP NEWTRON LED WITH CONNECTOR WITH LIGHT GREY CORD; Delivered with a light grey LED cord, a 4.7K potentiometer, SP newtron kit, an autoclavable LED handpiece, n.1, n.2, n.10P tips an autoclavable plastic boxes and three blue wrenches.

F 55 523 £1,012.00

SP NEWTRON LED WITH CONNECTOR WITH BELMONT CORD; Delivered with a Belmont LED cord, a 4.7K potentiometer, SP newtron kit, an autoclavable LED handpiece, n.1, n.2, n.10P tips an autoclavable plastic boxes and three blue wrenches.

F 55 511 £1,012.00

SP NEWTRON LED TO FIT ADEC 500 UNIT; Delivered with a Adec Surf LED cord, a 4.7K potentiometer, SP newtron kit, an autoclavable LED handpiece, n.1, n.2, n.10P tips an autoclavable plastic boxes and three blue wrenches.

F 55 531 £1,012.00

SP NEWTRON LED TO FIT ADEC 300 UNIT; Delivered with a Adec grey 61" LED cord, a 4.7K potentiometer, SP newtron kit, an autoclavable LED handpiece, n.1, n.2, n.10P tips an autoclavable plastic boxes and three blue wrenches.

F 55 524 £1,012.00

SP NEWTRON LED TO FIT ADEC Radius UNIT; Delivered with a Adec grey LED cord, a 4.7K potentiometer, SP newtron kit, an autoclavable LED handpiece, n.1, n.2, n.10P tips an autoclavable plastic boxes and three blue wrenches.

## CORDS AND ACCESSORIES

F00 195	£209.00
Light Grey Scaler Cord	



F 00 187	£209.00
Belmont Scaler Cord	



## ADEC SCALER CORD

F 01 153	£209.00
SP Newtron Cord for Adec 300 grey	



F 00 184	£209.00
SP Newtron 61" Cord for Adec 500 surf.	

F 00 234	£209.00
Adec Cord Radius, surf, 91"	



F 00 524	£50.00
SP Newtron coloured 4.7K Potentiometer	



## LED SCALER CORD

F 00 606	£143.00
Light Grey OEM LED Handpiece Cord	

F 00 616	£209.00
61" Adec Surf OEM LED Handpiece Cord	

F 00 618	£209.00
Dark Grey LED handpiece Cord Belmont	

F 00 632	£209.00
61" Adec 300 Grey LED OEM handpiece cord	



## LED SCALER UPGRADE KIT

Upgrade kit, used to convert and existing built in Lux Scaler to LED Scaler.

F 12 686	£543.00
Upgrade Kit	

Kit includes low voltage LED handpiece and cord.

F 12 607	£413.00
Low voltage LED scaler handpiece only	



### Important

when converting Lux kits to LED, in order to comply with existing power supply a low voltage handpiece must be used and is included in F12686.

Standard LED scaler handpiece should not be used. For more information regarding this please contact the Acteon sales team.

## AUTOCLAVABLE WRENCHES

Autocl. colored torque wrenches £28.00 Each  
(non compatible tips : ET, endo files, carbon tips, S04 condenser)

- F 81 320 Green  
F 81 321 Yellow  
F 81 322 Blue  
F 81 323 Orange



F 00 406 £24.00

Universal autoclavable wrench for tips



F 81 281 £11.00

Autoclavable ProtecTip cap for tips no. 1, 2, 3, 10P and 10X - no wrench function



F 12 352 £127.00

Plastic box with 4 pcs. autoclavable colored torque wrenches



F 12 351 £31.00

Autoclavable plastic box for colored torque wrenches



D 00 247 [free of charge](#)

TipCard for checking the wear of the scaling tips



D 00 248 [free of charge](#)

TipCard (free of charge) for checking the wear of the Perio tips



## AUTOCLAVABLE HANDPIECES

F 12 200 £229.00

Suprasson autoclavable handpiece, light grey



F 12 281 £380.00

Newtron handpiece, light grey body/dark grey nose, with removable nose cone



F 12 609 £413.00

Newtron LED handpiece, with removable nose cone



ZE 15 052 Pack of 5 £5.00

O-Ring (Small) for water nipple of Suprasson handpiece

ZE 15 019 Pack of 5 £5.00

O-Ring (Large) for Suprasson handpiece

D 00 263 [free of charge](#)

This leaflet provides you a clear view of our ultrasonic instrument line and the possibilities of different treatments. You can order it [free of charge](#) directly from us or from your dealer.

I 08 020 [free of charge](#)

Tip Book, is also available as a CD Rom





## Color Coding System

Periodontics

Endodontics

Scaling

Restorative dentistry/  
Prosthetics



# Prophylaxis Spares and accessories





## Scaling



tip no. 1  
F00246 £60.00  
universal



tip no. 2  
F00247 £60.00  
extreme



tip no. 3  
F00248 £60.00  
coatings



tip no. 10P  
F00253 £60.00  
supragingival,  
subgingival < 3 mm



tip no. 10X  
F00359 £60.00  
interproximal



tip no. 10Z  
F00254 £60.00  
subgingival



tip no. 1S  
F00245 £60.00  
supra/subgingival

## Scaling - hygiene



tip no. PFU  
F02170 £82.00  
universal



tip no. PFL  
F02171 £82.00  
premolars/molars,  
left-angled



tip no. PFR  
F02172 £82.00  
premolars/molars,  
right-angled

## Curettes and debridement



tip no. H1  
F00366 £81.00  
anterior teeth,  
diamond coated



tip no. H2L  
F00367 £81.00  
premolars/molars,  
left-angled,  
diamond coated



tip no. H2R  
F00368 £81.00  
premolars/molars,  
right-angled,  
diamond coated



tip no. H3  
F00369 £81.00  
anterior teeth,  
curette



tip no. H4L  
F00114 £104.00  
premolars/molars,  
left-angled, curette



tip no. H4R  
F00115 £104.00  
premolars/molars,  
right-angled, curette

## Periodontal maintenance (BDR)



tip no. TK1-1S  
F01001 £79.00  
short probe



tip no. TK1-1L  
F01004 £79.00  
long probe

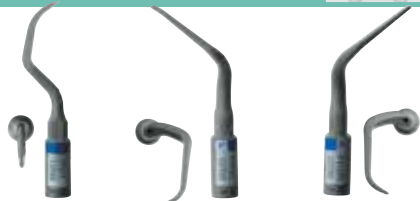


tip no. TK2-1L  
F02162 £79.00  
premolars/molars,  
left-angled



tip no. TK2-1R  
F02161 £79.00  
premolars/molars,  
right-angled

## Prosthetic/implant maintenance



tip no. PH1  
F00702 £53.00  
anterior teeth

tip no. PH2L  
F00705 £53.00  
premolars/molars,  
left-angled

tip no. PH2R  
F00706 £53.00  
premolars/molars,  
right-angled

Prosthetic implant maintenance - Carbon tips with spray supplied in Packs of 4

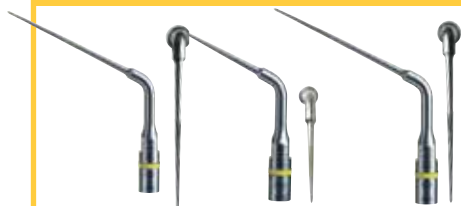
## Periodontal debridement



tip no. P2L  
F00090 £146.00  
very fine periodontium,  
left-angled

tip no. P2R  
F00091 £146.00  
very fine periodontium,  
right-angled

## Retreatment



tip no. ET40  
F88012 £76.00  
40 mm length

tip no. ET20D  
F88013 £75.00  
20 mm length,  
diamond coated

tip no. ET40D  
F88014 £75.00  
40 mm length,  
diamond coated

tip no. S04  
F88009 £50.00  
Condenser (small) for  
condensation of gutta  
percha points



## Endodontics - irrigation



K10/21 files  
F43710 £24.00  
ø 1/21 mm length

K10/25 files  
F43712 £24.00  
ø 1/25 mm length



K15/21 files  
F43715 £24.00  
ø 1,5/21 mm length

K15/25 files  
F43717 £24.00  
ø 1,5/25 mm length



K25/21 files  
F43725 £24.00  
ø 2,5/21 mm length

K25/25 files  
F43727 £24.00  
ø 2,5/25 mm length



K30/21 files  
F43730 £24.00  
ø 3/21 mm length

K30/25 files  
F43732 £24.00  
ø 3/25 mm length

PLEASE NOTE

blister files are sold in packs of 4 files of the same type



Passive ultrasonic irrigation



tip no. IRR 20-21  
F43807 £57.00  
ø 2/21 mm length

tip no. IRR 20-25  
F43808 £57.00  
ø 2/25 mm length

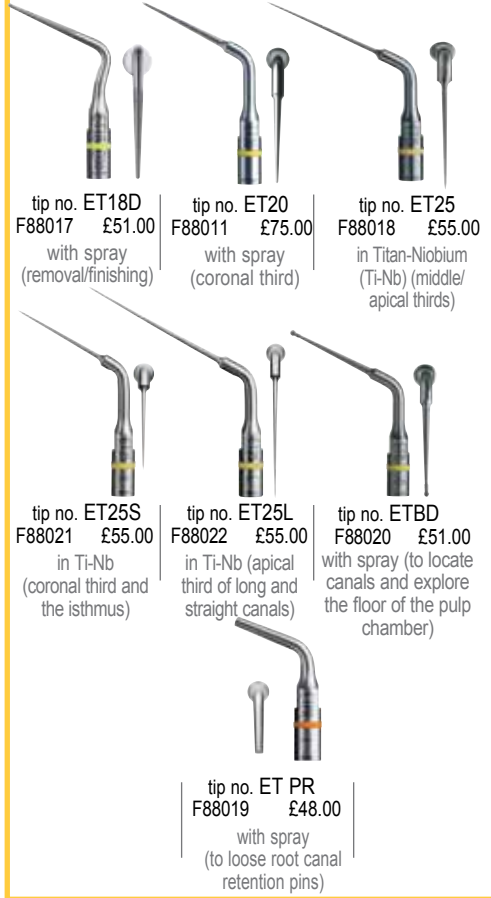
tip no. IRR 25-21  
F43805 £57.00  
ø 2,5/21 mm length

tip no. IRR 25-25  
F43806 £57.00  
ø 2,5/25 mm length

-Blister files are supplied in packs of 4-



Endodontics / Retreatment



tip no. ET18D  
F88017 £51.00  
with spray  
(removal/finishing)

tip no. ET20  
F88011 £75.00  
with spray  
(coronal third)

tip no. ET25  
F88018 £55.00  
in Titan-Niobium  
(Ti-Nb) (middle/  
apical thirds)

tip no. ET25S  
F88021 £55.00  
in Ti-Nb  
(coronal third and  
the isthmus)

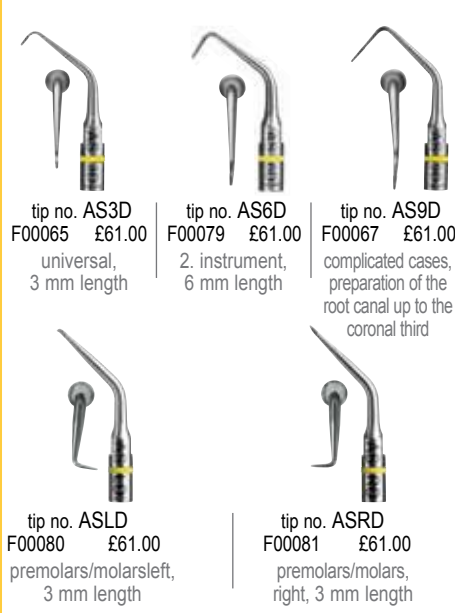
tip no. ET25L  
F88022 £55.00  
in Ti-Nb (apical  
third of long and  
straight canals)

tip no. ETBD  
F88020 £51.00  
with spray (to locate  
canals and explore  
the floor of the pulp  
chamber)

tip no. ET PR  
F88019 £48.00  
with spray  
(to loose root canal  
retention pins)



Apical surgery



tip no. AS3D  
F00065 £61.00  
universal,  
3 mm length

tip no. AS6D  
F00079 £61.00  
2. instrument,  
6 mm length

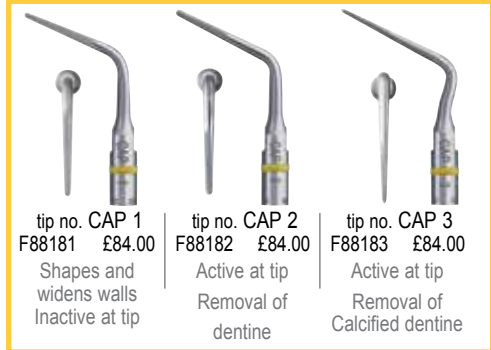
tip no. AS9D  
F00067 £61.00  
complicated cases,  
preparation of the  
root canal up to the  
coronal third

tip no. ASLD  
F00080 £61.00  
premolars/molarsleft,  
3 mm length

tip no. ASRD  
F00081 £61.00  
premolars/molars,  
right, 3 mm length



Canal Access Preparation



tip no. CAP 1  
F88181 £84.00  
Shapes and  
widens walls  
Inactive at tip

tip no. CAP 2  
F88182 £84.00  
Active at tip  
Removal of  
dentine

tip no. CAP 3  
F88183 £84.00  
Active at tip  
Removal of  
Calcified dentine



**Prothetics / Finishing**



tip no. PM1  
F02250 £57.00  
preparation of  
the dentine



tip no. PM2  
F02251 £57.00  
preparation/  
finishing of the  
dentine



tip no. PM3  
F02252 £39.00  
finishing



tip no. PM4  
F02253 £57.00  
prep. dentine and  
inlay-core cavities



**Minimally invasive excavation**



tip no. EX1  
F02040 £57.00  
ball diamond tip,  
occlusal



tip no. EX2  
F02041 £57.00  
half ball diamond  
tip, proximal



tip no. EX3  
F02042 £57.00  
half ball diamond  
tip, distal



tip no. EX-R  
F02043 £57.00  
half ball diamond,  
set 45° to the  
right



tip no. EX-L  
F02044 £57.00  
half ball diamond tip,  
set 45° to the left



**Finishing**



tip no. PMS1  
F02254 £57.00  
prep. dentine,  
intra-sulcular  
penetration



tip no. PMS2  
F02255 £57.00  
preparation/finishing  
of the dentine, intra-sulcular



tip no. PMS3  
F02256 £57.00  
polishing of the  
dentine surface,  
intra-sulcular

**Prothetics**



tip no. C20  
F00113 £60.00  
for condensation,  
Piezo-Cem-tip for inlays  
(incl. 3 caps)



tip no. 5AE  
F00249 £60.00  
loosening,  
with spray

**Warning notice !**

Use of non-original Satelec tips (without SATELEC manufacturers approval), will invalidate the product warranty resulting in the user being liable for any damaged caused.

Color code **Green**

1-10

**PERIO KIT**

F 00 936

£361.00

Delivered with n.1S, H3, H4L, H4R tips, three autoclavable dynamometric green wrenches, one autoclavable dynamometric blue wrench and an autoclavable box with storage space for handpiece.

**PERIO PRECISION KIT**

F 00 939

£427.00

2 Perio Precision tips (P2L and P2R) and 1 BDR tip no. TK1-1S, 3 autoclavable dynamometric green wrenches, and an autoclavable box with storage space for handpiece.

Color code **Yellow**

1-10

F88 180

£252.00

3 Endo Success Canal preparation Tips. Clinical Applications: To facilitate and optimize the canal access preparation and canal orifice. This kit contains 1 autoclavable tips support + 3 tips:

CAP1, CAP2 and CAP3 + universal wrench

F 00 069

£302.00

Treatment of the entire root canal following the principles of conventional endodontics

5 Endo tips (AS3D, AS6D, AS9D, ASLD and ASRD), complete with stainless steel box and universal wrench.

F 00 737

£250.00

6 Endo tips (ET18D, ET20, ET25, ET25S, ET BD and ET PR), complete with stainless steel box and universal wrench.



## EXCAVUS

Color code **Blue**



F 00 739

£303.00

5 Excavus tips (EX1, EX2, EX3, EX-R and EX-L), complete with stainless steel box and universal wrench.



## PERFECT MARGIN ROUNDED

F 00 738

£195.00

4 PM Rounded tips (PM1, PM2, PM3 and PM4), complete with stainless steel box and universal wrench.



## PERFECT MARGIN SHOULDER

F 00 736

£195.00

3 PM Shoulder tips (PMS1, PMS2 and PMS3) and 1 PM Rounded tip no. PM4, complete with stainless steel box and universal wrench.



## SCALING KIT

F 00 934

£352.00

Delivered with n.1, n.1S, n.10X, H3 tips, three autoclavable dynamometric blue wrenches, one autoclavable dynamometric green wrench and an autoclavable box with storage space for handpiece.

## *Implant Centre 2*

Multi-functional implantology unit with two drive units and three modes of operation – now with a touch screen interface

# ULTRASONIC IMPLANTOLOGY *AT A TOUCH*

Designed according to the latest technical and clinical innovations, our implantology products combine the best of ultrasonic and motor technologies for implant surgery.

Our second generation models now feature a large, user-friendly touch-sensitive screen.

## *Piezotome 2*

The complete surgical unit for osteotomy and sinus lift – with a user-friendly touch screen interface. For further information visit: [www.piezotome.com](http://www.piezotome.com)





# Impantology and surgery





### IMPLANT CENTER LED II

Ultrasonic generator with I-Surge and Piezotome (combination unit) - more power and with LED light

F 27 202

£9,726.00

Implant Center 2

Complete with I-Surge micro-motor, a motor cord, a progressive footswitch, 2 brackets, 2 handpiece holder, 2 sterilizable irrigation lines with 30 pcs. disposable sterile perforators, ultrasonic handpieces and contra-angle 20:1 not included.

Min. vibration frequency : 28 - 36 kHz

External dimensions : 472.9 x 149.5 x 339.9 mm

(W x H x D)

Weight : 5 000 g

3 modes in one unit :

Piezotome mode -> Ultrasonic Pre-implant surgery

I-Surge mode -> Implant Motor

Newtron mode -> All conventional treatments



### PIEZOTOME II

Piezoelectric Ultrasonic Surgery - more power and with LED-light

F 57 401

£5,448.00

Piezotome 2

Complete with a progressive footswitch, 2 brackets, 2 handpiece holders, 2 sterilizable irrigation lines with 30 pcs. disposable sterile perforators, ultrasonic handpieces and contra-angle 20:1 not included.

Min. vibration frequency : 28 - 36 kHz

External dimensions : 472.9 x 149.5 x 339.9 mm

(W x H x D)

Weight : 5 000 g

### Important

The piezotome handpiece and tip packs are sold separately.

Please see Piezotome accessories on pages 24-31.

Surgical tips designed for Piezotome II and ImplantCenter II **cannot** be used with Piezotome and ImplantCenter and viceversa.

For further information visit the piezotome web site at:  
[www.piezotome.com](http://www.piezotome.com)



## PIEZOTOME SOLO

Piezoelectric Ultrasonic Surgery

F 57 502 £5,072.00

Piezotome Solo

Delivered with Piezotome Solo Unit, mains cord, footswitch, a handpiece and cord, essential II kit (6 tips)

1 x easytorque Piezotome wrench, 1 x bracket, 1 x handpiece support, 2 x sterilizable irrigation lines and 15 perforators, user manual, clinical booklet and clinical video.

F 57 512 £5,174.00

Piezotome Solo LED

Delivered with Piezotome Solo Unit, mains cord, footswitch, an LED handpiece and cord, essential II kit (6 tips)

1 x easytorque Piezotome wrench, 1 x bracket, 1 x handpiece support, 2 x sterilizable irrigation lines and 15 perforators, user manual, clinical booklet and clinical video.

F 57 504 £759.00

Footswitch



## PIEZOTOME ACCESSORIES

F 57 509 £1,035.00

Handpiece and Cord for Piezotome Solo



F 57 521 £1,608.00

LED Handpiece and Cord for Piezotome Solo



F 12 815 £1,608.00

LED Handpiece and Cord for Piezotome II



## ESSENTIAL



F 87 528 £1,007.00

Essential II kit

Autoclavable stand with 6 tips:

BS1 Slim II / BS4 II / SL1 II / SL2 II / SL3 II / LC2 II and 1 x universal wrench

F 87 529 £2,069.00

Essential II pack

Delivered with sterilization box, piezotome Solo handpiece and cord, essential II kit, Easytorque Piezotome wrench

# CREST SPLITTING

F 87 560 £1,679.00

CS II pack

Sterilization box, 1 x Piezotome II LED handpiece and cord, 1 x autoclavable stainless steel stand with; CS1, CS2, CS3, CS4, CS5, CS6 Tips, 1 x Easytorque Piezotome wrench

F 87 567 £723.00

Delivered with 1 x autoclavable stainless steel stand with; CS1, CS2, CS3, CS4, CS5, CS6 Tips, 1 x Easytorque Piezotome wrench.



## Crest Slitting (CS)



CS 1 II tip  
F87561 £117.00  
Fine tip dedicated to pilot osteotomy upto 8mm



CS 2 II tip  
F87562 £117.00  
Tip dedicated to the second osteotomy upto 8mm of depth.



CS 3 II tip  
F87563 £117.00  
Scalpel used for the discharges incisions in mesial and distal sides, upto 8mm of depth.



CS 4 II tip  
F87564 £117.00  
Conical tip for bone expansion. Tip thickness: 1.80mm at 8mm.



CS 5 II tip  
F87565 £117.00  
Conical tip for bone expansion. Tip thickness: 2.75mm at 8mm.



CS 6 II tip  
F87566 £117.00  
Conical tip for bone expansion. Tip thickness: 3.75mm at 8mm.

## PIEZOTOME PACKS

F 87 323 £998.00

Piezotome Pack with a sterilization box, autoclavable Piezotome handpiece with cord, 5 clips, an Easytorque dynamometric wrench.

F 87 324 £929.00

Newtron Pack with a sterilization box, autoclavable Newtron handpiece, Newtron handpiece cord, 5 clips, an Easytorque dynamometric wrench.

F 87 523 £1,665.00

Piezotome Pack II with a sterilization box, autoclavable Piezotome II LED light handpiece with cord, an Easy-torque dynamometric wrench

F 87 524 £1,507.00

Newtron Pack II with a sterilization box, autoclavable Newtron LED light handpiece, Newtron LED light handpiece cord, an Easytorque M dynamometric wrench.



## BONE SURGERY PACKS

F 87 300 £1,315.00

Piezotome BS Pack

Delivered with an autoclavable Piezotome handpiece with cord, a BS kit with BS1, BS2L, BS2R, BS4, BS5, BS6 tips and a Piezotome dynamometric wrench

F 87 500 £2,045.00

Piezotome BS II Pack

Delivered with an autoclavable Piezotome II handpiece with cord, a BS II kit with BS1 II, BS2L II, BS2R II, BS4 II, BS5 II, BS6 II tips and a Piezotome dynamometric wrench



## SINUS LIFT PACKS

F 87 310 £1,253.00

### Piezotome SL Pack

Delivered with an autoclavable Piezotome handpiece with cord, a SL kit with SL1, SL2, SL3, SL4, SL5 tips and a Piezotome dynamometric wrench

F 87 510 £2,045.00

### Piezotome SL II Pack

Delivered with an autoclavable Piezotome II handpiece with cord, a SL II kit with SL1 II, SL2 II, SL3 II, SL4 II, SL5 II tips and a Piezotome dynamometric wrench



## INTRALIFT PACKS

F 87 330 £1,333.00

### Piezotome Intralift Pack

Delivered with an autoclavable Piezotome handpiece with cord, a Intralift kit with TKW1, TKW2, TKW3, TKW4, TKW5 tips, an autoclavable universal wrench

F 87 530 £1,896.00

### Piezotome Intralift II Pack

Delivered with an autoclavable Piezotome II handpiece with cord, a Intralift II kit with TKW1 II, TKW2 II, TKW3 II, TKW4 II, TKW5 II tips, an autoclavable universal wrench



## CROWN EXTENSION PACKS

F 87 350 £1,253.00

### Piezotome Crown Extension Pack

Delivered with an autoclavable Piezotome handpiece with cord, a Crown Extension kit with CE1, CE2, CE3, BS6 tips and a Piezotome dynamometric wrench

F 87 550 £2,045.00

### Piezotome Crown Extension II Pack

Delivered with an autoclavable Piezotome handpiece with cord, a Crown Extension kit with CE1 II, CE2 II, CE3 II, BS6 II tips and a Piezotome dynamometric wrench

## EXTRACTION PACKS

F 87 340 £1,122.00

### Piezotome Extraction Pack

Delivered with an autoclavable Piezotome handpiece with cord, an Extraction kit with LC1, LC1-90°, LC2, LC2L, LC2R, NINJA tips and a Piezotome dynamometric wrench

F 87 540 £2,045.00

### Piezotome Extraction II Pack

Delivered with an autoclavable Piezotome II handpiece with cord, an Extraction II kit with LC1 II, LC1-90° II, LC2 II, LC2L II, LC2R II, NINJA II tips and a Piezotome dynamometric wrench

## Bone Surgery (BS)



- |   |  |  |
|---|--|--|
| <p><b>BS1 II tip</b><br/>F87301 £101.00<br/>F87501 £123.00</p> <p>ultra-cutting saw, specifically sharpened, 6 mm cutting depth</p> | <p><b>BS1 II Slim tip</b><br/>F87525 £123.00</p> <p>Tips only compatible with 2. generation of the units!<br/>ultra-sharp saw with slim profile, especially for cutting very dense cortical bone, 9 mm cutting depth</p> | <p><b>BS1 II Long tip</b><br/>F87527 £123.00</p> <p>long and slim profile saw, for easy grasping of the ramus graft, 15 mm cutting depth</p> |
|---|--|--|



- |   |  |
|---|--|
| <p><b>BS2L II tip</b><br/>F87302 £101.00<br/>F87502 £101.00</p> <p>left-angled bone saw</p> | <p><b>BS2R II tip</b><br/>F87303 £101.00<br/>F87503 £101.00</p> <p>right-angled bone saw</p> |
|---|--|



- |   |  |   |
|---|--|---|
| <p><b>BS4 II tip</b><br/>F87304 £101.00<br/>F87504 £101.00</p> <p>Osteoplasty and bone harvesting</p> | <p><b>BS5 II tip</b><br/>F87305 £101.00<br/>F87505 £101.00</p> <p>Osteoplasty and bone osteotomy</p> | <p><b>BS6 II tip</b><br/>F87306 £101.00<br/>F87506 £101.00</p> <p>curved scalpel particularly recommended for osteoplasty</p> |
|---|--|---|

## External Sinus lift (SL)



- |   |  |  |
|---|--|--|
| <p><b>SL1 II tip</b><br/>F87311 £78.00<br/>F87511 £78.00</p> <p>diamond-coated tip, 90 µm</p> | <p><b>SL2 II tip</b><br/>F87312 £78.00<br/>F87512 £78.00</p> <p>ball diamond-coated tip, 90 µm</p> | <p><b>SL3 II tip</b><br/>F87313 £78.00<br/>F87513 £78.00</p> <p>flat-ended tip</p> |
|---|--|--|



- |  |   |
|--|---|
| <p><b>SL4 II tip</b><br/>F87314 £98.00<br/>F87514 £98.00</p> <p>flat-ended non cutting tip, 90° angled</p> | <p><b>SL5 II tip</b><br/>F87315 £78.00<br/>F87515 £78.00</p> <p>flat-ended non cutting tip, 120° angled</p> |
|--|---|

## CROWN EXTENSION



## Crown lengthening



- |  |  |   |
|--|--|---|
| <p><b>CE1 II tip</b><br/>F87351 £98.00<br/>F87551 £98.00</p> <p>Osteoplasty, in oral and palatal zones, reducing osseous irregularity, ø 1.75 mm</p> | <p><b>CE2 II tip</b><br/>F87352 £98.00<br/>F87552 £98.00</p> <p>Osteoplastic, interproximal, ø 1.15 mm</p> | <p><b>CE3 II tip</b><br/>F87353 £98.00<br/>F87553 £98.00</p> <p>Osteotomies of the tooth-supporting bone in interproximal, oral and palatal periradicular zones</p> |
|--|--|---|

**Internal sinus lift**

**Extraction**



<b>TKW1 II tip</b> F87331 £129.00 F87531 £129.00 conical tip, diamond coated, ø 1.35 mm, pilot drill	<b>TKW2 II tip</b> F87332 £129.00 F87532 £129.00 cylinder tip, diamond coated, ø 2.10 mm, primary	<b>TKW3 II tip</b> F87333 £129.00 F87533 £129.00 cylinder tip, diamond coated, ø 2.35 mm, primary
---	--	--



<b>TKW4 II tip</b> F87334 £129.00 F87534 £129.00 rounded end, ø 2.8 mm, secondary	<b>TKW5 II tip</b> F87335 £141.00 F87535 £141.00 elevation of membrane and packing of filling material, ø 3.0 mm
--	---



<b>LC1 II tip</b> F87307 £123.00 F87507 £123.00 Syndesmotomy, periradicular osteotomy	<b>LC1-90° II tip</b> F87341 £123.00 F87541 £123.00 access to interproximal, lingual and distal molar areas	<b>LC2 II tip</b> F87342 £123.00 F87542 £123.00 Slim tip, access to reduced spaces
--	--	---



<b>LC2L II tip</b> F87343 £123.00 F87543 £123.00 45° to the left, for posterior areas	<b>LC2R II tip</b> F87344 £123.00 F87544 £123.00 45° to the right, for posterior areas	<b>NINJA II tip</b> F87345 £164.00 F87545 £164.00 double cutting surfaces on the upper and lower sides of this tip, for hard tissues such as bone and dentin. Laser markings every 3 mm
--	---	--

**Warning notice !**

The surgical tips designed for Piezotome II and ImplantCenter II cannot be used with Piezotome and ImplantCenter and viceversa.

1. generation		→ Ref. no. in black
2. generation		→ Ref. no. in blue



### HANDPIECES AND CORDS

F 57 321 £667.00

Piezotome handpiece with cord, 5 clips



F 12 281 £380.00

Newtron handpiece, light-grey, with removable front part



F 57 305 £285.00

Newtron handpiece cord, autoclavable and removable, with 5 clips



F 12 815 £1,608.00

Piezotome II LED handpiece and Cord



F 57 521 £1,608.00

Piezotome Solo Newtron LED light handpiece cord



F 12 609 £413.00

Newtron LED light handpiece (100.000 Lux, cold light (6.000-7.000 °K))



### IRRIGATION LINES

F 57 370 Set of 10 pcs £142.00

Irrigation lines for pump with pump cartridge for single use (for old generation of Max units too)



F 57 374 Kit £95.00

1 sterilizable line (autoclavable tube, about 100 cycles) with 10 pcs. disposable sterile perforators



E 57 374 £68.00

Disposable sterile irrigation line



F 57 372 Kit of 10 pcs £23.00

10 perforators



F 12 830 £599.00

Piezotome II Newtron LED light handpiece cord



F 12 821 £61.00

Piezotome II LED ring for LED light handpiece



## STAINLESS STEEL BOXES

X 88 454	£52.00
for BS tips	
X 88 455	£52.00
for SL tips	
X 88 452	£52.00
for Intralift tips	
X 88 453	£52.00
for Extraction tips	

## ACCESSORIES

F 27 141	£220.00
Sterilization box for handpiece / handpiece cord / tips and wrench	

F 27 156	£303.00
Sterilization box for handpiece / handpiece cord / tips and wrench	



F 57 350	£104.00
Piezotome wrench	



E57341	£208.00
Piezotome multifunction footswitch	



F 57 404	£641.00
Progressive footswitch for Piezotome II and ImplantCenter II	



## ACCESSORIES

F 02 463	£23.00
Handpiece holder for scaler handpieces	



F 27 125	£967.00
----------	---------

Implant Center II Cart  
Dimensions :600 (W) x 500 (D) x 790 (H) mm  
Glass tray :500 x 600 mm  
Color :light grey  
Loading per tray :max. 7.5 kg



I 57 373	free of charge
Piezotome clinical booklet	

E 27 113	£34.00
Piezotome II bracket	



**Kit BS (Bone Surgery)**

F 87 309	Kit	£473.00
----------	-----	---------

6 BS tips (BS1, BS2L, BS2R, BS4, BS5 and BS6) and a stainless steel box

**Kit BS II (Bone Surgery)**

F 87 509	Kit	£473.00
----------	-----	---------

6 BS II tips (BS1 II, BS2L II, BS2R II, BS4 II, BS5 II and BS6 II) and a stainless steel box

**Kit SL (external sinus lift)**

F 87 319	Kit	£396.00
----------	-----	---------

5 SL tips (SL1, SL2, SL3, SL4 and SL5) and a stainless steel box

**Kit SL II (external sinus lift)**

F 87 519	Kit	£396.00
----------	-----	---------

5 SL II tips (SL1 II, SL2 II, SL3 II, SL4 II und SL5 I) and a stainless steel box

**Kit INTRALIFT**

F 87 336	Kit	£656.00
----------	-----	---------

Elevation of membrane by hydrodynamic effect – 5 TKW tips (TKW1, TKW2, TKW3, TKW4 and TKW5) and a stainless steel box

**Kit II INTRALIFT**

F 87 536	Kit	£656.00
----------	-----	---------

5 TKW II tips (TKW1 II, TKW2 II, TKW3 II, TKW4 II and TKW5 II) and a stainless steel box

**Kit EXTRACTION**

F 87 346	Kit	£759.00
----------	-----	---------

6 Extraction tips (LC1, LC1-90°, LC2, LC2L, LC2R and NINJA) and a stainless steel box

**Kit II EXTRACTION**

F 87 546	Kit	£759.00
----------	-----	---------

6 Extraction II tips (LC1 II, LC1-90° II, LC2 II, LC2L II, LC2R II and NINJA II) and a stainless steel box



### Kit **CROWN EXTENSION**

F 87 354 Kit £404.00

3 CE tips (CE1, CE2, CE3) and BS6 tip and a stainless steel box

### Kit II **CROWN EXTENSION**

F 87 554 Kit £404.00

3 CE tips (CE1 II, CE2 II, CE3 II) and BS6 II tip, and a stainless steel box



### NEWTRON PERIO KIT

F 87 321 Kit £498.00

6 Perio tips (H1, H2L, H2R, H3, H4L and H4R) and a stainless steel box



### ENDO **SUCCESS** APICAL SURGERY

F 00 069 Kit £302.00

5 Endo tips (AS3D, AS6D, AS9D, ASLD and ASRD) an universal wrench and a stainless steel box



### NEWTRON MICRO-RETRO - KIT

F 87 325 Kit £215.00

3 Micro-Retro tips (P14D, P15LD and P15RD) and a stainless steel box



## *I-Surge +*

A powerful unit with reliable electronic speed and torque control



Progressive multi-function footswitch

# POWERFUL & COMPACT THE ALL-NEW I-SURGE RANGE

Simple and reliable implantology products with powerful motors that have a smooth and stable motion for precision implant surgery.

Both units feature 7 contra-angle ratios, 5 customisable programs, and a multi-function footswitch equipped with pressure sensor.

## *I-Surge*

The most compact implantology motor on the market





# Implant / Endo Motors and Electrosurgery



**I-SURGE**  
Implantology • Motor



F 28 724 £2,306.00

I-Surge

Delivered with case containing I-Surge unit, mains cord, I-Surge autoclavable motor and cord, 1 x bracket, motor holder, foot pedal and user manual

### I-SURGE AND I-SURGE + ACCESSORIES

F 28 750 £75.00

Motor tubings (x10) Irrigation lines

F 28 751 £93.00

Bracket

F 28 752 £47.00

Motor holder

F 28 721 £300.00

I-Surge Footswitch



**I-SURGE +**  
Implantology • Motor



F 28 744 £2,541.00

I-Surge+

Delivered with case containing I-Surge+ unit, mains cord, I-Surge autoclavable motor and cord, 1 x bracket, motor holder foot pedal and user manual.

F 28 741 £338.00

I-Surge+ Footswitch



F 28 722 £1,157.00

I-Surge motor and cord

(compatible with both I-Surge and I-Surge+ units)



F 28 722 £1,214.00

I-Surge LED motor and cord







F 28 800 £1,205.00  
 I-Endo Dual unit  
 Delivered with case containing I-Endo unit, mains cord, footswitch, motor and cord, motor holder and user manual.

F 28 850 £545.00  
 I-Endo motor and cord



F 28 752 £47.00  
 Motor holder

F 28 801 £113.00  
 I-Endo Dual Footswitch



**CONTRA ANGLE HANDPIECES FOR IMPLANT AND I-ENDO MOTORS**

F 36 128 £895.00  
 Contra angle speed decreasing HP 20:1 for implantology (W&H)



F 36 134 £1,181.00  
 W&H Handpiece for implant with LED Contra angle



F 36 133 £504.00  
 Contra angle HP 16:1 W&H for I-Endo



F 36 129 £895.00  
 Contra angle HP 20:1 non-LED



**Important**  
 Contra angle handpieces can only be sold with a I-Surge / I-Surge + or I-Endo unit and cannot be sold separately.

**SERVOTOME**  
Electrosurgery • Unit



### SERVOTOME

High frequency electrocautery for quick precise and safe oral surgery on soft tissue.

F 57 240 £1,115.00

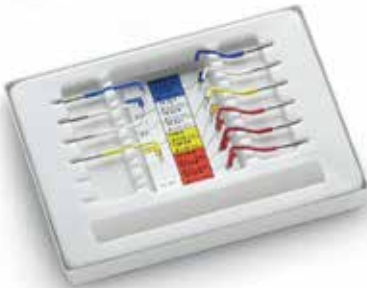
Servotome unit

Complete with autoclavable handpiece with autoclavable cord, a capacitive coupler, a box 10 electrodes.

Dimensions : 250 x 110 x 240 mm  
(W x H x D) / 1 200 g

F 10 440 Box £283.00

Box 10 different electrodes, 1 electrode of each type



F 00 443 £9.00

Light grey electrode holder support

F 00 485 £34.00

Capacitive coupler (Neutral Plate)



F 00 475 £154.00

Light grey autoclavable electrode holder cord

F 00 476 £169.00

Light grey autoclavable electrode holder



X 00 981 £96.00

Cap for handpiece

## SINGLE ELECTRODES

F 10 421 £31.00

electrode TYP 122S



F 10 422 £31.00

electrode TYP 122CA



F 10 424 £31.00

electrode TYP TR22L



F 10 425 £31.00

electrode TYP TR22R



F 10 427 £31.00

electrode TYP TR22T



## SINGLE ELECTRODES

F 10 429 £31.00

electrode TYP FC32B



F 10 430 £31.00

electrode TYP FC10N



F 10 431 £31.00

electrode TYP 140S



F 10 432 £31.00

electrode TYP 140CA



F 10 428 £31.00

electrode TYP FC25B



## Perfection at your fingertips

Introducing the **Air 'n' Go** dual purpose polisher for precise care and treatment in a single handpiece.

'Supra' version for perfect cosmetic results and 'Perio' version for a simple and efficient way to treat periodontal diseases.

Air 'n' Go polishing powders, in fresh flavours, focus on the patient's well-being.



# WE LOVE TO CREATE



## Mini LED quality on hand

The **Mini LED Black** is the first curing light that is battery powered. With no cord or charger, the anodized aluminum handpiece is handy and precise in a pen-style design. The very high-performance single LED emits light in the most efficient part of the spectrum, suiting most currently available composites.

## Infection Control

**Art by Riskontrol** Liven up your practice with these non-sterile, disposable 3-in-1 tips available in 4 flavours: liquorice, aniseed, mandarin and blackcurrant.





# Prophylaxis / Polishers





**AIR-N-GO**

The first dual purpose air polisher **SUPRA** (supra-gingival) and **PERIO** (sub-gingival)

Air polisher with quick connection to the turbine coupling

F 10 200 £934.00

Delivered in a carry case with : 1 **SUPRA** powder tank (blue, supra-gingival), 1 KaVo® Multiflex® adaptor, 1 hygienist nose, 1 long nose, 1x 120° nozzle, 2 diam. 0.5 and 1 mm probes, 1 "Classic" bottle Peppermint powder, 4 sticks of "Classic" with different flavors, 1 "Pearl" neutral stick, 1 kit of o´rings, user manual, quickstart, installation CD

Length of the handpiece with long head: 205 mm; with short head: 193 mm

Water supply : irrigation flow at 15 ml/min ± 5 ml/min; Air supply : 4 bars maximum

F 10 201 £934.00

As above but with Sirona® adapter

F 10 202 £934.00

As above but with W&H® adapter

F 10 203 £934.00

As above but with Bien-Air® adapter

F 10 204 £934.00

As above but with NSK® adapter

F 10 221 £934.00

As above but with Midwest adapter



**AIR-N-GO PERIO**

Kit for the treatment of periodontitis and peri-implantitis

F 10 215 £509.00

Delivered in a carton with : 1 **PERIO** powder tank (green, sub-gingival), 1 PERIO nozzle, Air N Go Perio Prophy powder, user manual, quickstart, installation CD



**AIR-N-GO NOZZLES**

F 10 212 £268.00

SUPRA nozzle 120°



F 10 211 £268.00

SUPRA nozzle 90°



F 10 210 £268.00

PERIO nozzle



F 10 218 £48.00

Short hygienist nose



F 10 219 £48.00

Long nose



F 10 205 Kit of 10 pcs £16.00

Rubber joints



F 10 213 £190.00

Supra blue tank



F 10 216 £190.00

Perio green tank



F 10 207 £14.00

Supra probe, diam., ø 0.5 mm



F 10 208 £14.00

Supra probe, diam., ø 1 mm



F 10 206 £9.00

Perio probe



F 10 240 £265.00

KaVo® Multiflex adaptor



F10241 £404.00

Sirona® adaptor



F 10 242 £253.00

W&H® adaptor



F 10 243 £253.00

Bien-Air® adaptor



F 10 244 £253.00

NSK® adaptor



F 10 245 £212.00

Midwest adaptor



### Important

On page 40 you will find all information about our range of powders.

For further information visit the Air n Go website:  
[www.airngoconcept.com](http://www.airngoconcept.com)

KaVo® and MULTiflex LUX® are a trademark of Kaltenbach & Voigt GmbH & Co., Germany. Sirona® is a trademark of Sirona Dental Systems GmbH, Germany. W&H® and Roto Quick® are a trademark of W&H Dentalwerk Bürmoos GmbH, Austria. Bien-Air® and Unifix® are a trademark of Bien-Air Dental S.A., Switzerland. NSK® is a trademark of NSK Europe GmbH, Germany.



air N GO



### AIR-N-GO "CLASSIC" bottles

Sodium bicarbonate, for supra-gingival treatment

F 10 250	Pack of 4	£69.00
Peppermint "CLASSIC" bottles of powder, 250 g each		
F 10 251	Pack of 4	£69.00
Lemon "CLASSIC" bottles of powder, 250 g each		
F 10 252	Pack of 4	£69.00
Raspberry "CLASSIC" bottles of powder, 250 g each		
F 10 253	Pack of 4	£69.00
Cola "CLASSIC" bottles of powder, 250 g each		
F 10 254	Pack of 4	£69.00
Neutral "CLASSIC" bottles of powder, 250 g each		
F 10 255	Mixed Pack of 4	£69.00
4 Flavours "CLASSIC" bottles of powder, 250 g each Peppermint, lemon, raspberry and cola		



air N GO



### AIR-N-GO "CLASSIC" Sticks

Sodium bicarbonate, for supra-gingival treatment

F 10 256	Box of 50 pcs	£96.00
Peppermint "CLASSIC" sticks of 20 g each		
F 10 257	Box of 50 pcs	£96.00
Lemon "CLASSIC" sticks of 20 g each		
F 10 258	Box of 50 pcs	£96.00
Raspberry "CLASSIC" sticks of 20 g each		
F 10 259	Box of 50 pcs	£96.00
Cola "CLASSIC" sticks of 20 g each		
F 10 260	Box of 50 pcs	£96.00
Neutral "CLASSIC" sticks of 20 g each		

### AIR-N-GO "PEARL"

Calcium carbonate, for supra-gingival treatment

F 10 262	Pack of 4 pcs	£107.00
"PEARL" bottles of 250 g each, neutral		
F 10 263	Box of 50 pcs	£125.00
"PEARL" sticks of 20 g each, neutral		



### AIR N GO PERIO PROPHY POWDER

Glycine, for sub-gingival treatment (Perio)

F 10 268	Pack of 4	£69.00
Air N Go Perio Prophy Powder, bottle of 100 g		





## AIR-MAX

Air polisher

F 11 400 £1,587.00

Airmax unit with autoclavable ProphyPen polisher handpiece, kit o' rings for PU handpiece cord, 1 titanium nozzle 135°, a powder intro kit (1 x peppermint and 1 x Lemon flavoured powders), 1 autoclavable wrench and 1 single pedal,

External dimensions : 250 x 110 x 300 mm  
(W x H x D) Weight : 2.700 g

## ACCESSORIES

F 10 554 £289.00

ProphyPen polisher handpiece with a titanium nozzle 135°, wrench and bayonet connection

F 10 556 £179.00

ProphyPen polisher handpiece with a titanium nozzle 135° and an autoclavable wrench



F 10 555 £69.00

Titanium nozzle 135° for ProphyPen handpiece



## PROPHY-MAX

Ultrasonic generator and air polisher

F 11 601 £2,658.00

ProphyMax unit with Suprasson II autoclavable white handpiece for all ultrasonic treatments, disconnectable autoclavable ProphyPen polisher handpiece, titanium nozzle 135°, single pedal, a powder intro kit (1 peppermint and 1 lemon bottle), a grey/blue handpiece cord. Min. vibration frequency : 28 - 36 kHz

External dimensions. : 250 x 110 x 300 mm  
(W x H x D) Weight; 2.500 g

F 11 610 £2,870.00

As above with multi-function footswitch



## IRRIGATION KIT

F 59 750 £630.00

Sterijoint II adapter for Suprasson II autoclavable handpiece, a bracket, 2 tanks with 450 ml with cap, 3 double irrigation lines, a single irrigation line, a cord connection cable.

External dimensions: 150 x 90 x 200 mm (W x H x D)  
Weight : 520 g



### P-MAX NEWTRON XS

Ultrasonic generator with LED light handpiece

F 58 504 £2,767.00

Basic unit with autoclavable Newtron LED light handpiece for all ultrasonic treatments, complete with LED handpiece cord, autoclavable wrench, multifunction footswitch.

Min. vibration frequency : 28 - 36 kHz

Irrigation flow rate : 5 - 40 ml/min.

External dimensions : 290 x 135 x 260 mm (W x H x D)  
Weight : 3.200 g

### SPARE PARTS

F 12 609 £413.00

Autoclavable Newtron LED light handpiece  
(100.000 LUX)

F 00 628 £229.00

LED light handpiece cord (2 m long)

F 58 525 £55.00

Tank (300 ml) with cover

F 00 062 £193.00

Multifunction footswitch

F 58 590

Pump kit

### STERIJONTS AND ACCESSORIES

F 58 703 £88.00

Sterijoint (autoclavable adaptor for external irrigation from the peristaltic pump)



F 58 705 £88.00

Sterijoint II adaptor for Suprasson II handpiece



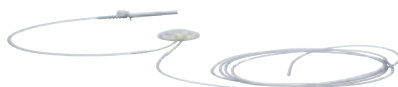
F 12 640 £187.00

Sterijoint LED adaptor for Newtron LED light handpiece



F 58 370 Set of 10 pcs £162.00

Lines for pump with pump cartridge for single use  
(For use with old generation Max units)



F 58 790 Set of 10 pcs £23.00

Rubber stoppers



Autoclavable bottle £10.00

F 58 792 with 3 hangers, blue cap

F 58 793 with 3 hangers, green cap



Cap for autoclavable bottle £6.00

X 58 792 blue

X 58 793 green





Mini LED  
Auto Focus



# Curing lights



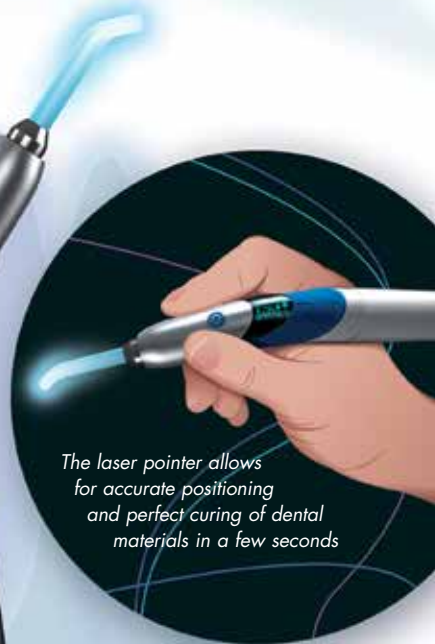


# POWER AND ACCURACY

ScanWave  
by TITANIUM LED

Introducing the new  
ScanWave from Acteon.

Designed in co-operation  
with dental universities,  
Scanwave, with its wide  
spectrum from 390 to  
510nm and automatic  
wavelength scan, covers  
all photo-initiators  
and activates all the  
photosensitive materials  
used by the dental  
market.



*The laser pointer allows  
for accurate positioning  
and perfect curing of dental  
materials in a few seconds*



For further information:  
**01480 477307**

info@acteongroup.co.uk | sales@acteongroup.co.uk | www.acteongroup.com

We  to create



F 05 450 £1,464.00

Scanwave Complete  
 Wavelength: 390-485 nm  
 Lithion battery handpieces anodized aluminum  
 Comes with handpiece, battery, battery charger,  
 power supply, ø7.5 mm opalescent light guide, and  
 a 5 mm oval shield.

F 05 460 £709.00

Scanwave Handpiece



F 05 451

Scanwave Battery



F 05 452

Scanwave Base Station



F 05 470

Scanwave Light Guide 7.5ø mm



F 05 471

Scanwave Light Guide 5.5ø mm



F 05 475

Scanwave Light Shield



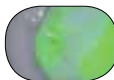
F 05 216

Scanwave Power Supply

Modern dentistry involves adhesive dentistry. Advances in adhesion and inpolymerization have made it possible to change everyday clinical practices. Various dental material sarecurrantly used according to the clinical situations and the associated techniques.



**Vaneers**  
(Adhesive)



**Restoration**  
(Glass Ionomer)



**Whitening**  
(Dam)



**Restoration**  
(Composite)



**Brackets**  
(Adhesive)



**Posts**  
(Cements)

Mini LED  
AutoFocus



### MINI LED AUTOFOCUS 2

LED curing light with 2 special features AutoFocus and target ring)

F 05 300

£1,018.00

Delivered complete with a grey Autofocus handpiece, a battery, a battery charger, a power supply cord, a 7.5  $\varnothing$  mm light guide and eyeshield.

4 modes: fast, pulse, ramping, soft ramping

Wavelength : 420 - 480 nm

Light guide 7.5  $\varnothing$  mm with a power of 2.200 mW/cm<sup>2</sup>

LED indicators

Dimensions : 24  $\varnothing$  mm / length 201 mm

Weight : 185 g



### ACCESSORIES MINI LED AUTOFOCUS 2

F 02 910

£329.00

Battery charger

F 02 901

£99.00

Lithium ion battery, rechargeable



F 05 213

£24.00

Oval protection shield



Mini LED  
SuperCharged



### MINI LED SUPERCHARGED

LED curing light (polymerisation of all types of composites on the market in just 3 seconds)

F 05 214

£924.00

Lamp complete with a grey handpiece, a battery, a battery charger, a power supply cord, a 7.5  $\varnothing$  mm light guide and oval protection shield

3 modes : fast, pulse and ramping.

Wavelength : 420 - 480 nm



Light guide 7.5  $\varnothing$  mm with a power of 2.000 mW/c

LED indicators

Dimensions : 24  $\varnothing$  mm / length : 201 mm

### ACCESSORIES MINI LED SUPERCHARGED

F 02 917

£387.00

Battery charger

F 02 901

£99.00

Lithium ion battery, rechargeable



F 61 507 Kit of 5 pcs

£24.00

Autoclavable eyeshields, 7.5  $\varnothing$  mm





Mini LED



Mini LED ORTHO 2



**MINI LED**

LED curing light (polymerisation of all types of composites (2 to 3 mm) in just 6 to 12 seconds)

F 02 635 £865.00

Lamp complete with a grey handpiece, a battery, a battery charger, a power supply cord, a 7.5 ø mm light guide and oval protection shield

3 modes : fast, pulse and ramping

Wavelength : 420 - 480 nm



Light guide 7.5 ø mm with a power of 1.250 mW/cm2

Dimensions : 23 ø mm / length : 200 mm

Battery size : 10 ø cm / height : 8 cm

Weight : 165 g

**ACCESSORIES FOR MINI LED**

F 02 520 £99.00

Titanium battery



F 02 510 £291.00

Battery Charger



**MINI LED ORTHO 2**

LED curing light (for orthodontics)

F 05 220 £984.00

Lamp complete with a grey handpiece, a battery, a battery charger, a power supply cord, a 5.5 ø mm light guide, oval protection shield

4 exposure times : 4 sec., 8 sec., 12 sec., 32 sec.

Wavelength : 420 - 480 nm

Booster light guide 5.5 ø mm with a power of 3.000 mW/cm2

Dimensions : 24 ø mm / length : 201 mm

Weight : 160 g

**ACCESSORIES MINI LED ORTHO 2**

F 02 546 £29.00

Power supply

F 02 555 £24.00

Oval protection shield





## MINI LED ADVANTAGE

F 02 456 £609.00

### Mini LED

Delivered complete with power supply cord, a 7.5  $\emptyset$  mm light guide and oval protection shield  
3 modes : fast, puls and ramping

Light guide 7.5  $\emptyset$  mm  
with a power of 1.250 mW/cm



LED indicators : red or green

Dimensions : 23  $\emptyset$  mm / length : 180 mm

F 05 213 £24.00

Oval protection shield



## MINI LED BLACK

F 05 400 £451.00

### Mini LED Black

Battery operated with 3 x AA batteries (not included)  
Delivered complete Mini LED Black Handpiece and Oval Light Shield.

F 05 409 £129.00

Mini LED Black light guide 7.5  $\emptyset$  mm

## LIGHT GUIDES

F 02 647 £143.00

Opalescent multi-fibered (2.200 mW/cm<sup>2</sup>, white, 7.5  $\emptyset$  mm) for Mini LED AutoFocus 2

F 02 648 £120.00

Opalescent multi-fibered (1.250 mW/cm<sup>2</sup>, white, 7.5  $\emptyset$  mm, 45°), efficient polymerisation of composite over 5 mm thick for Mini LED, Mini LED SuperCharged, Mini LED Ortho 2

F 02 652 £134.00

Opalescent multi-fibered (2.000 mW/cm<sup>2</sup>, 5.5  $\emptyset$  mm, white, 45°), for Mini LED, Mini LED SuperCharged, Mini LED Ortho 2



## BUILD-IN KITS



### MINI LED AUTOFOCUS 2 KITS

F 05 322 £883.00

MINI LED AF2 OEM kit with light grey cord

F 05 323 £883.00

MINI LED AF2 OEM kit with Belmont cord

F 05 321 £883.00

MINI LED AF2 OEM kit with Adec surf cord

F 02 991 £883.00

MINI LED AF2 OEM Adec 300 kit with Adec grey cord

### MINI LED STANDARD OEM KITS



F 02 715 £561.00

Acteon UK Mini LED OEM

Delivered with a Mini LED OEM handpiece, a module, a light grey cord, a diam. 7.5mm light guide and an oval light shield

F 02 719 £561.00

Mini LED OEM Belmont

Delivered with a Mini LED OEM handpiece, a module, a Belmont cord, a diam. 7.5mm light guide and an oval light shield

## BUILD-IN KITS



### MINI LED SUPERCHARGED KITS

F 05 205 £883.00

MINILED Supercharged OEM kit with light grey cord

F 05 207 £883.00

MINI LED Supercharged OEM kit with Belmont cord

F 05 208 £883.00

MINI LED Supercharged OEM kit with Adec cord

### MINI LED STANDARD OEM KITS

F 02 505 £561.00

Mini LED OEM Adec 500

Delivered with a Mini LED OEM handpiece, a module, a Adec 500 cord, a diam. 7.5mm light guide and an oval light shield

F 02 538 £561.00

MINI LED OEM ADEC 300

Delivered with a Mini LED OEM handpiece, a module, a Adec 300 cord, a diam. 7.5mm light guide and an oval light shield

### IMPORTANT

All OEM kits are delivered with a Mini LED OEM handpiece, a module, a cord, a 7.5mm diam light guide and an oval light shield.

## MINI LED CORDS

F 02 721 £60.00

MINI LED Cord Belmont

F 02 722 £60.00

MINI LED Cord Medium Grey Adec 300

F 02 723 £60.00

MINI LED Cord Light Grey

F 02 326 £60.00

MINI LED Cord for Adec 500 Surf



## AUTOFOCUS CORDS

F 02 981 £60.00

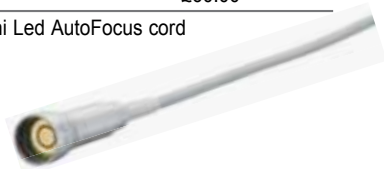
Mini Led AutoFocus cord light grey

F 02 988 £60.00

Belmont Mini Led AutoFocus cord

F 02 989 £60.00

Adec Mini Led AutoFocus cord



## MINI LED HANDPIECES

F 02 530 £467.00

Mini LED Standard Handpiece only



F 05 217 £585.00

Mini LED Supercharged Handpiece



F 02 710 £467.00

Mini LED OEM Handpiece only



F 05 302 £543.00

Mini LED AF2 Handpiece only



## MINI LED MODULES ONLY

F 02 982 £226.00

Mini LED AutoFocus Module

F 02 730 £212.00

Mini LED Standard and AutoFocus 2 Module only





# Sterilization





Class B medical grade autoclave

**QUAZ 5.17**

F 03 908	£5,835.00
----------	-----------

**QUAZ 6.17**

F 03 915	£6,365.00
----------	-----------

Quaz

Complete with Duel function support for five trays or 3 cassettes. Five aluminium trays of 280 x 180 x 20mm, SD memory card, tray removal handle, distilled water filling / emptying tube, residual water emptying tube, emergency door opener, door gasket, a usual manual and maintenance manual.

**QUAZ ACCESSORIES**

F 03 918	£398.00
----------	---------

Quaz Dem 6.10 demineralizer (ca. 75 l)



F 03 916	£619.00
----------	---------

Quaz Dem 6.20 demineralizer (ca. 150 l)

**QUAZ ACCESSORIES**

F 03 914	£147.00
----------	---------

Filter cartridge 20" (150 l)

F 03 919	£83.00
----------	--------

Filter cartridge 10" (75 l)

F 03 927	£823.00
----------	---------

Label printer



F 03 928	£90.00
----------	--------

Label printer 2 sticker roles and 2 roles foils



F 03 912	£26.00
----------	--------

Sterilization cassette



F 03 903	£76.00
----------	--------

Inox support 5 trays / 3 sterilization cassettes



F 03 902	£46.00
----------	--------

SD Memory card

F 03 900	£20.00
----------	--------

Tray

## Specification

User-friendly touchscreen display, the settings of the last 50 cycles are recorded in the SD card or printed with the optional Quaz printer, possible cycle labels with identification of the cycle and quantity of labels by program selection, two independent tanks for distilled and residual water. Possibility to automatically fill and empty the tanks at rear prior to installation, anti-condensation system after the cycle is over, night cycle selectable, guaranteed 2 years or 2.000 cycles

## Technical Data

- 3 sterilization programs : 134°C (4 min.), 134°C (18 min.), 121°C (15 min.), personalized program for night cycle for eg.
- Chamber volume : 17 l  
(ø 250 mm x (W) 355 mm)
- Max. load (incl. trays) : 4.5 kg instruments / 1.5 kg textiles
- Maintenance after 1.000 cycles. Weight : 53 kg
- External dimensions : 460 x 570 x 425 mm  
(W x D x H)
- 2 autonomous tanks for water : 7.5 l for distilled water and 3.5 l for used water
- Variable cycle data through Reflex system
- Minimized water consumption depending on the quantity of the charge

## SOFTLY ALMAGAMATOR



## SOFTLY ALMAGAMATOR

Amalgamator

60100712

£357.00

suitable for application capsules

External dimensions : 210 x 205 x 120 mm (W x H x D)

Weight : 3.1 kg



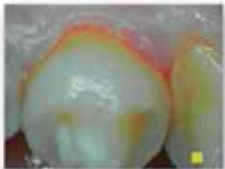


# SOPRO CARE

## STATE-OF-THE-ART PHOTONICS TECHNOLOGIES



Cario mode



Perio mode



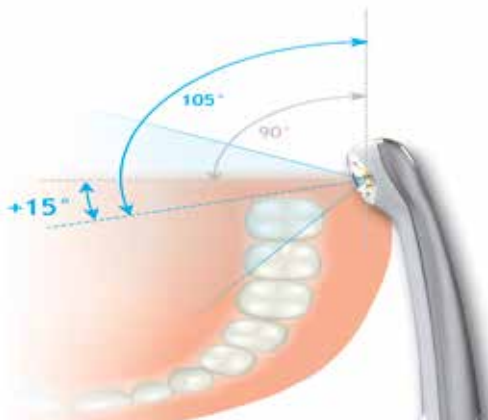
Daylight mode

Developed to assist the dental professional during prophylaxis and periodontal treatment

The **SoproCare** camera utilises unique fluorescence technology to illuminate dental tissue to reveal caries in 'CARIO' mode, as well as new and old dental plaque in 'PERIO' mode. Additionally, **SoproCare** is the first product on the market to reveal gingival inflammation.

In 'DAYLIGHT' mode, **SoproCare** can also be used as a camera, providing all of the necessary tools to perform a complete and time efficient oral examination. The dental professional can now achieve complete prophylactic treatment with just one device.

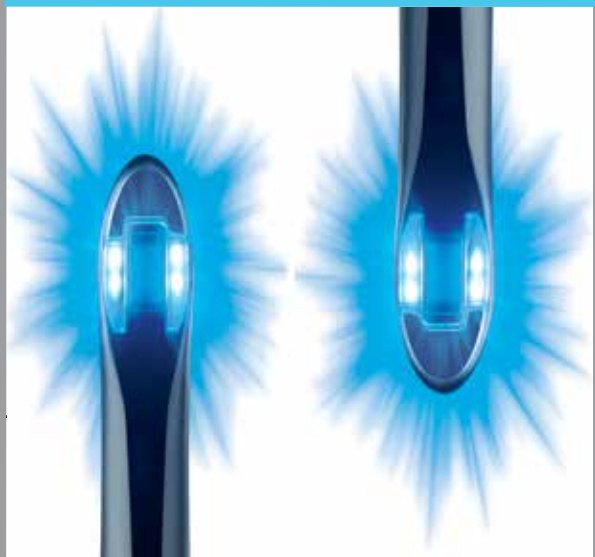




SOPRUCARE



# Intra - oral cameras



SOPRO 617



extra-oral



intra-oral



extra-oral



Sensitive Touch



## SOPRO 617 CAMERA HANDPIECE

Intra-oral camera, USB2

S\_617\_0001 £1,454.00

Sopro 617 intra-oral camera (55 g) delivered with a handpiece holder

## TABLE TOP DOCKING STATIONS

S\_717\_1013 £1,215.00

Dock with image memory for Video.

With Video/S-Video. Delivered with one 1,5 meters video cable, one 1,5 meters S-video cable, one 2,5 meters linking cable. Compatible with all Sopro Camera handpieces.

S\_717\_1002 £1,377.00

Dock with image memory and USB2 output for Windows.

With Video/S-Video/USB2 outputs. Delivered with one 1,5 meters video cable, one 1,5 meters S-video cable, one 2 meters USB cable, one 2,5 meters linking cable. Compatible with all Sopro Camera handpieces.

S\_717\_2101 £1,377.00

Dock with image memory and USB2 output for Mac.

Supplied As Above - with Mac software

Compatible with all Sopro Camera handpieces.



SOPRO 717



extra-oral



intra-oral



macro



## SOPRO 717 First CAMERA HANDPIECE

Intra-oral camera, USB2

S\_717\_0100 £1,999.00

Sopro 717 First intra-oral camera (75 g) delivered with a handpiece holder

## USB DIRECT DOCKING STATIONS

S\_595\_1115 £680.00

Dock USB2.0 (86g): for Windows.

Docking station for freezing.

Delivered with a 3.5m linking cable, Includes Sopro Imaging Software for Windows.

Compatible with all Sopro Camera handpieces.

External dimensions : 75 x 29 x 17mm (L, D, H)

S\_717\_2000 £680.00

Dock USB2.0 (86g): for Mac.

Docking station for freezing.

Delivered with a 3.5m linking cable, Includes Sopro Imaging Software for Mac.

Compatible with all Sopro Camera handpieces.

External dimensions : 75 x 29 x 17mm (L, D, H)





extra-oral

intra-oral

Macro



Diagnosis mode

Treatment aid mode

For further information visit the Soprolife web site at: [www.soprolife.com](http://www.soprolife.com)



## SOPROLIFE CAMERA HANDPIECE

Intra-oral camera with caries detection system, USB2

S\_900\_0001 £2,900.00

Soprolife intra-oral camera (78 g) delivered with 4 intra oral tips, 2 light shields and a handpiece holder

### BUILT-IN DOCKING STATIONS USB2 & VIDEO

S\_717\_1031 £1,215.00

Built-In docking station with Image memory for Video

Includes Soprolife Imaging Software.

Compatible with all Soprolife Camera handpieces.



S\_717\_1006 £1,425.00

Built-in docking station with image memory, USB2 output and video for Windows.

Includes Soprolife Imaging Software for Windows.

Compatible with all Soprolife Camera handpieces.



DOCK MU\_USB2 MAC £1,425.00

Built-in docking station with image memory, USB2 output and video for Mac.

Includes Soprolife Imaging Software for Mac.

Compatible with all Soprolife Camera handpieces.



For further information visit the Soprocure web site at: [www.soprocure.com](http://www.soprocure.com)



## SOPROCARE CAMERA HANDPIECE

Intra-oral camera with caries detection system, USB2

S\_950\_0001 £2,499.00

Soprocure intra-oral camera (78 g) delivered with 4 intra oral tips, 2 light shields and a handpiece holder

### BUILT-IN DOCKING STATIONS

S\_717\_1500 £1,215.00

Built-In Docking Station with Image

memory and USB2 output for Windows.

Includes Soprolife Imaging Software for Windows.

Compatible with all Soprolife Camera handpieces.



DOCK U\_USB2 MAC £1,215.00

Built-In Docking Station with Image

memory and USB2 output for Windows.

Includes Soprolife Imaging Software for Windows.

Compatible with all Soprolife Camera handpieces.



**ACCESSORIES FOR SOPRO CAMERAS**

926030		£64.00
Handpiece Holder for SoproLife		
		
926011		£36.00
717 Camera handpiece holder		
		
926027		£36.00
Camera handpiece holder		
		
926063		£51.00
Universal Handpiece holder Sopro 617 / 717 SoproLife and SoproCare Cameras		
		
990135	Set of 4 pcs	£82.00
Intra-oral tip / protection tip against light (sterilization by autoclave)		
		
403017	Set of 500	£140.00
Sheaths for 717 + Soprolife		
403023	Set of 500	£140.00
Sheaths for Sopro 617		
403001	Set of 500	£140.00
Sheaths for Sopro 595		
		



5\_50\_5001 free of charge  
 SOPRO IMAGING software for demonstration until the patient n°10. To use the camera after the patient n°10, please order the dongle.



990136 Set of 2 pcs £80.00  
 Light shield / protection shield against light (sterilization by autoclave)



107048 £193.00  
 USB single user dongle for sopro imaging software. Necessary if using the Sopro Imaging software version 1.71 or anterior or with a 'Non Sopro' intra oral camera. "



009002 £46.00  
 Footswitch for Image memory.



009009 £115.00  
 USB2.0 pedal for freeze frame Image memory.



## LINKING CABLES FOR BUILT-IN DOCKS FOR TYPE U\_USB2



### ADEC 300

922140 £157.00

Adec 300; uk cord holder; 2m

922141 £384.00

Adec 300; uk cord holder; 7m



### ADEC 500

922160 £206.00

Adec 500; uk cord holder; 5m

922139 £324.00

Adec 500; uk cord holder; 7m



### BELMONT

922162 £206.00

Belmont; instrument Holder; 5m

922166 £384.00

Belmont; UK Cord Holder; 7m



### SATELEC GREY

922087 £206.00

Satelec uk cord holder; 5m

922088 £297.00

Satelec uk cord holder; 7m



## LINKING CABLES FOR TABLE TOP DOCKS

922051 £206.00

Linking Cable with connectors on both ends; 5m

922120 £297.00

Linking Cable with connectors; 7m



## LINKING CABLES FOR BUILT-IN DOCKS FOR TYPE MU\_USB2/VIDEO



### ADEC 300

922126 £157.00

Adec 300; uk cord holder; 2m

922127 £384.00

Adec 300; uk cord holder; 7m



### ADEC 500

922105 £206.00

Adec 500; uk cord holder; 5m

922106 £324.00

Adec 500; uk cord holder; 7m



### BELMONT

922069 £206.00

Belmont; instrument Holder; 5m

922094 £384.00

Belmont; UK Cord Holder; 7m



### SATELEC GREY

922069 £206.00

Satelec uk cord holder; 5m

922094 £297.00

Satelec uk cord holder; 7m



## LINKING CABLES WITHOUT SHEATHS

922063 £206.00

Linking Cable without sheaths, with connectors; 5m

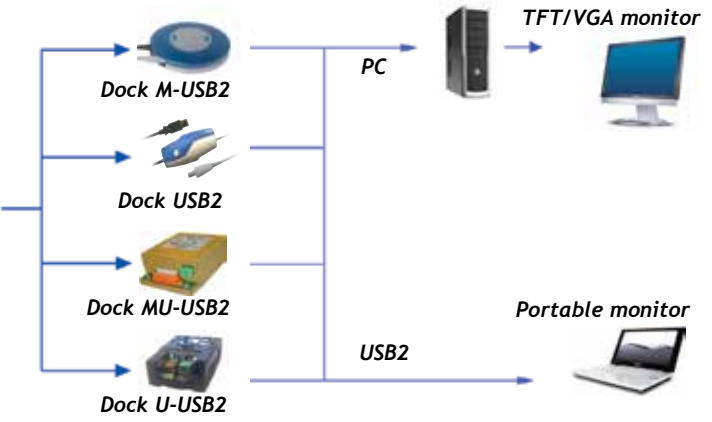
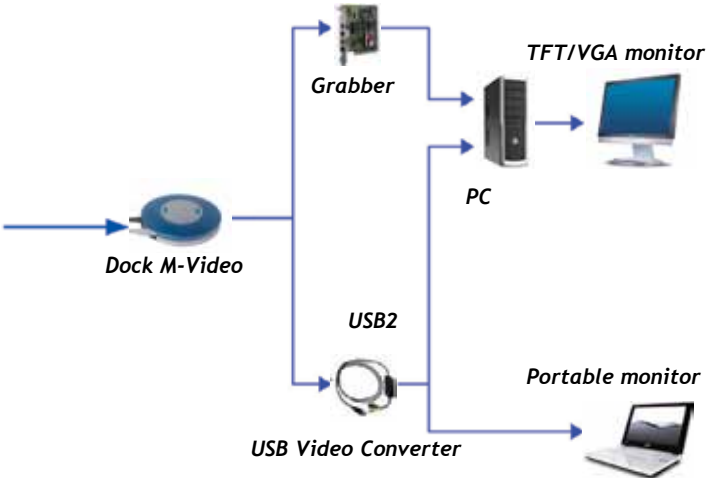
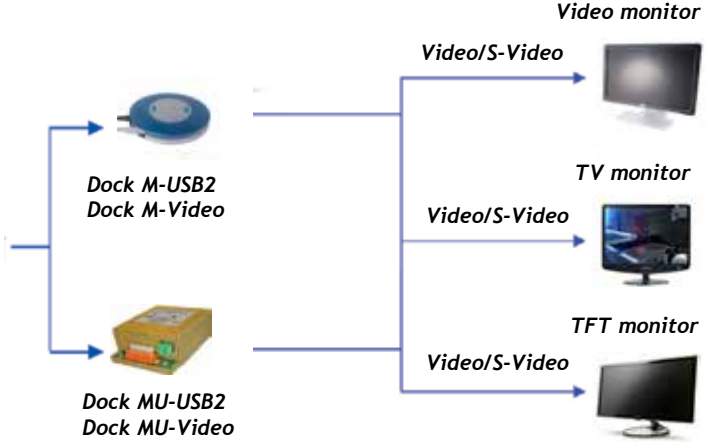
922064 £274.00

Linking Cable without sheaths with connectors; 7m





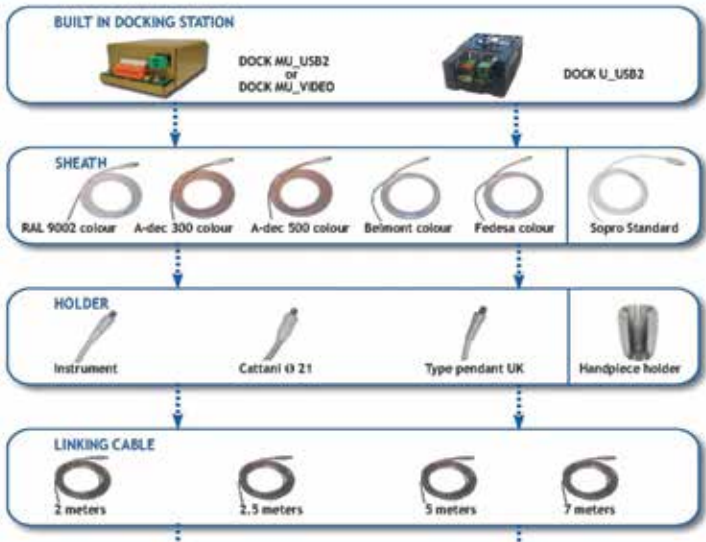
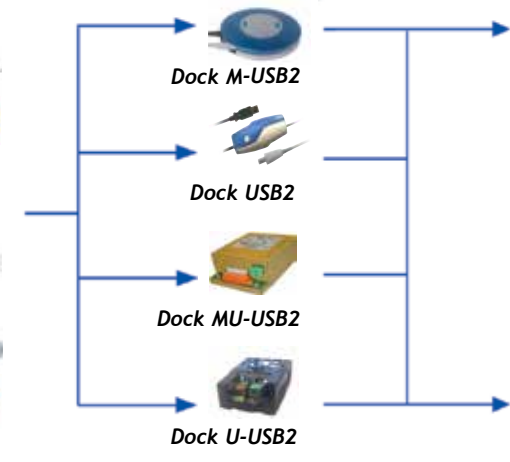
# SOPRO VIDEO AND TV - CONNECTIONS







# SOPRU MAC - CONNECTIONS





**RECOMMENDED CONFIGURATION REQUIRED****FOR SOPRO INTRA-ORAL CAMERAS USB2**

Operating system : Windows XP Pro sp1, Vista 32 bit and 64 bit or Windows 7 with 32 bit and 64 bit

Processor : Intel Pentium III - 800 MHz (but the frame rate may not be at full speed with Windows 2000 sp4)

Hard Disk capacity : 20 Gb

System memory (RAM) : 512 Mb

Graphic Card : 128 Mb RAM (with dedicated memory) compatible with DirectX 9.0 and able of

running at a minimum resolution 1024 x 768 pixels

2 USB 2.0 ports with Intel or Nec Chipset

PC conformed to IEC 60950 (International Safety Standard for Information Technology Equipment)

Power supply : ATX 12V v2.x compliant, 350 W min.

**AVOID :**

Motherboard with integrated graphics chipset

VIA or SIS USB chipset

**MINIMUM CONFIGURATION REQUIRED FOR****SOPRO INTRA-ORAL CAMERAS USB2**

Operating system : Windows XP Pro sp2, Vista 32 bit

and 64 bit, Windows 7 with 32 bit and 64 bit,

Processor : Intel Pentium 4 - 2.86 GHz or higher

Hard Disk capacity : 150 Gb or higher

System memory (RAM) : 1 Gb or higher

Graphic Card :

nVidia GeForce or ATI Radeon 128 Mb

RAM (without Shared Memory) compatible with DirectX

9.0 and able of running at a min. resolution of 1024 x 768

4 USB 2.0 ports with Intel or Nec Chipset

PC conformed to IEC 60950 (International Safety Standard for Information Technology Equipment)

Power supply : ATX 12V v2.x, Active PFC compliant. (USB problems are often due to bad quality power supplies).

The power supply needs to be enough

powerful : 400 W minimum

**TECHNICAL SPECIFICATION SOPROLIFE**

Sensor :	High sensitivity 1/4" CCD
Resolution :	(752 x 582) PAL, (768 X 494) NTSC
Lighting :	4 LED for white mode and for blue mode
Angle of view :	70°
Adjustments :	4 pre-set positions : -Extra-oral -Intra-oral -LIFE -Macro
Handpiece :	(H) 200 x diam. 30
Weight :	78 g
Output :	Video, S-Video or USB2

**TECHNICAL SPECIFICATION SOPRO 717 FIRST**

Sensor :	1/4" CCD high sensitivity
Resolution :	(752 x 582) PAL, (768 X 494) NTSC
Lighting :	8 LED
Angle of view :	70°
Adjustments :	3 pre-selections :  -Intra-oral (5 - 30 mm) -Extra-oral (30 mm to infinity)
Handpiece :	200 x 28 x 24 mm (L, W, H)
Weight :	75 g
Output :	Video, S-Video or USB2

**TECHNICAL SPECIFICATION SOPRO 617**

Sensor :	1/4" CCD
Resolution :	(752 x 582) PAL, (768 X 494) NTSC
Lighting :	8 LED
Angle of view :	80°
Adjustments :	automatic
Handpiece :	205 x 28 x 24 mm (L, W, H)
Weight :	55 g
Output :	Video FBAS, Video Y/C or USB2



# Digital X-Rays / Sopro





## PSPIX

Digital X-ray phosphor plate system, with preview screen; imaging plates can be read and erased at the same time, are reusable and can be used in single or multi user - upto 7

S\_700\_165 £9,700.00

Delivered with 10 standard imaging plates with 4 different sizes (2x size 0, 2 x size 1, 4x size 2 and 2x size 3), 4x 100 protective covers for imaging plate, 4x 100 hygiene bags, an imaging plate storage box, a collector, Ethernet cable 3 m

700200 Mixed Plates £397.00

Standard Imaging plate set  
2 x Size 0 / 2 x Size 1 / 4 x Size 2 / 2 x Size 3



## MINIMUM CONFIGURATION REQUIRED

Operating system :Windows XP Pro SP2, VISTA SP1 or Windows 7 with 32 and 64 bit

Processor : Intel Pentium III - 500 MHz

Video board : 128 Mb RAM

Memory : 512 Mb

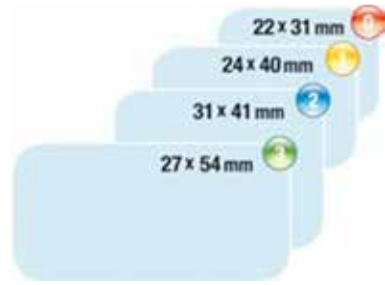
Hard disk : 80 GB

Screen resolution : 1.024 x 768 Pixel

Ethernet board : 100 MB - 1 Gb

Compatible with TWAIN system

## PSPIX ACCESSORIES



## PSPIX IMAGING PLATES

700178 Set of 6 pcs £263.00

Standard imaging plate - size 0  
(22 x 31 mm)

700179 Set of 6 pcs £263.00

Standard imaging plate - size 1  
(24 x 40 mm)

700180 Set of 6 pcs £263.00

Standard imaging plate - size 2  
(31 x 41 mm)

700181 Set of 6 pcs £263.00

Standard imaging plate - size 3  
(27 x 54 mm)

## PSPIX IDOT IMAGING PLATES

700182 Set of 6 pcs £348.00

IDOT-imaging plate (higher resolution) for size 0  
(22 x 31 mm)

700183 Set of 6 pcs £348.00

IDOT-imaging plate (higher resolution) for size 1  
(24 x 40 mm)

700184 Set of 6 pcs £348.00

IDOT-imaging plate (higher resolution) for size 2  
(31 x 41 mm)

700185 Set of 6 pcs £348.00

IDOT-imaging plate (higher resolution) for size 3  
(27 x 54 mm)

## PLASTIC HYGIENE BAGS

700342L Set of 250 pcs £40.00

Hygiene bags for imaging plate - size 0



700343L Set of 250 pcs £40.00

Hygiene bags for imaging plate - size 1



700344L Set of 250 pcs £40.00

Hygiene bags for imaging plate - size 2



700345L Set of 250 pcs £40.00

Hygiene bags for imaging plate - size 3



700194 £50.00

Storage box



## BAGS AND CARDBOARD COVERS

700338L Set of 250 pcs £66.00

Protective cover and Hygiene bag- size 0



700339L Set of 250 pcs £66.00

Protective cover and Hygiene bag- size 1



700340L Set of 250 pcs £66.00

Protective cover and Hygiene bag- size 2



700341L Set of 250 pcs £66.00

Protective cover and Hygiene bag- size 3



700195 £129.00

Positioning set for PSPiX including 5 positioning holders with ring for bitewing and 2 centring devices



703004 £287.00

Power Supply for PS Pix



### Important

We provide a warranty of 3 years for PS Pix



## SOPIX 2 HIGH DEFINITION USB DIGITAL X-RAY SYSTEM

### HIGH DEFINITION WINDOWS COMPATIBLE



S\_802\_0004                      £4,959.00

SOPIX<sup>2</sup> USB **SENSOR SIZE 1** - HIGH DEFINITION

1,5 Mpixels CMOS sensor with optic fiber, theoretical resolution of 25 pl/mm, 3,70 m cable. Includes ACE technology(Automatic Control Exposure).

Delivered with a sensor holder and 10 sensor sheath.

S\_802\_0005                      £7,193.00

SOPIX<sup>2</sup> USB **SENSOR SIZE 2** - HIGH DEFINITION

2,21 Mpixels CMOS sensor with optic fiber, theoretical resolution of 25 pl/mm, 3,70 m cable. Includes ACE technology(Automatic Control Exposure).

Delivered with a sensor holder and 10 sensor sheath.

### HIGH DEFINITION MAC COMPATIBLE



S\_802\_2000                      £7,193.00

SOPIX<sup>2</sup> USB **SENSOR SIZE 2** - HIGH DEFINITION

2,21 Mpixels CMOS sensor with optic fiber, theoretical resolution of 25 pl/mm, 3,70 m cable. Includes ACE technology(Automatic Control Exposure).

Delivered with a sensor holder and 10 sensor sheath.

S\_802\_2001                      £4,959.00

SOPIX<sup>2</sup> USB **SENSOR SIZE 1** - HIGH DEFINITION

1,5 Mpixels CMOS sensor with optic fiber, theoretical resolution of 25 pl/mm, 3,70 m cable. Includes ACE technology(Automatic Control Exposure).

Delivered with a sensor holder and 10 sensor sheath.



## SOPIX 2 STANDARD DEFINITION USB DIGITAL X-RAY SYSTEM

### STANDARD DEFINITION WINDOWS COMPATIBLE



S\_802\_3000                      £4,959.00

SOPIX<sup>2</sup> USB **SIZE 1** - STANDARD DEFINITION

1,5 Mpixels CMOS sensor with optic fiber, theoretical resolution of 25 pl/mm, 3,70 m cable. Includes ACE technology(Automatic Control Exposure).

Delivered with a sensor holder and 10 sensor sheath.

S\_802\_3001                      £7,193.00

SOPIX<sup>2</sup> USB **SIZE 2** - STANDARD DEFINITION

2,21 Mpixels CMOS sensor with optic fiber, theoretical resolution of 25 pl/mm, 3,70 m cable. Includes ACE technology(Automatic Control Exposure).

Delivered with a sensor holder and 10 sensor sheath.

### STANDARD DEFINITION MAC COMPATIBLE



S\_802\_4000                      £7,193.00

SOPIX<sup>2</sup> USB **SIZE 1** - STANDARD DEFINITION

2,21 Mpixels CMOS sensor with optic fiber, theoretical resolution of 25 pl/mm, 3,70 m cable. Includes ACE technology(Automatic Control Exposure).

Delivered with a sensor holder and 10 sensor sheath.

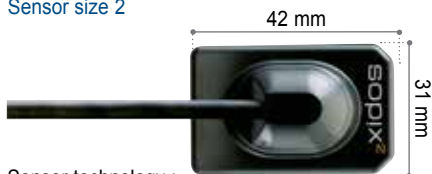
S\_802\_4001                      £4,959.00

SOPIX<sup>2</sup> USB **SIZE 1** - STANDARD DEFINITION

1,5 Mpixels CMOS sensor with optic fiber, theoretical resolution of 25 pl/mm, 3,70 m cable. Includes ACE technology(Automatic Control Exposure).

Delivered with a sensor holder and 10 sensor sheath.

## Sensor size 2



Sensor technology :

CMOS + CSI scintillator + optic fibre

Active surface area : 884 mm<sup>2</sup> (26 x 34 mm)

Number of pixels : 2,21 Mio.

## SOPIX 2 ACCESSORIES

700042 £104.00

Positioning set for Sopix2 sensors including 5 positioning set with ring (bitewing, anterior, posterior, endo anterior, endo posterior) and 5 centring devices



926 029 £22.00

Sopix2 sensor holder for size 1 or 2

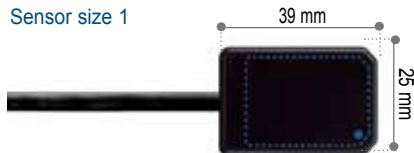


107048 £193.00

USB dongle



## Sensor size 1



Sensor technology :

CMOS + CSI scintillator + optic fibre

Active surface area : 884 mm<sup>2</sup> (26 x 34 mm)

Number of pixels : 2,21 Mio.

Sheaths Set of 500 £210.00

403 026 Sheaths for Sopix2 sensor size 1

403 027 Sheaths for Sopix2 sensor size 2

05001 [free of charge](#)

SOPRO IMAGING software for demonstration until the patient n°10. To use the camera after the patient n°10, please order the dongle.

# INTRA ORAL CAMERAS

## *Sopro 617*

Curved ergonomics with  
105° angle of view  
for better exploration  
of distal areas

The **Sopro 717 First** is the latest intra oral camera in the Sopro range, featuring improved 'MacroVision' capabilities for easy observation of treatment areas.

Eight powerful LEDs ensure the brightest images, while the focus ring of the Sopro 717 First allows great depth of field whichever operating mode you choose (extra oral, intra oral and macro). Furthermore the slender head design provides unique comfort in the patient's mouth, even where space is tight.

## *Sopro 717 series*

High performance intra oral camera that works with all dental imaging software

## *Dock M-USB*

Docking station with image memory and USB2 output for Sopro intra oral cameras



**XMind**



# Intra - oral X-Rays








## X-MIND AC

Intra-oral X-ray (conventional generator)  
complete with X-ray head rectangular collimator, 70  
kV, pantograph arm, timer

59023760	£3,163.00
----------	-----------

<hr/>	
X-Mind AC Short Arm 400mm	

59023761	£3,163.00
----------	-----------

<hr/>	
X-Mind AC Standard Arm 800mm	

59023762	£3,417.00
----------	-----------

<hr/>	
X-Mind AC Long Arm 1100mm	

NS00001	£116.00
---------	---------

<hr/>	
X-Mind Spreader Plate	

## TECHNICAL SPECIFICATIONS

Classification : Electromedical equipment

Class 1, type B

Supply voltage : 220/230 V<sup>-</sup> monophasé, 50/60 Hz

X-ray tube : 70 kV / 8 mA (Toshiba DG 073B)

Focal spot : 0.7 mm

Power absorption at 220 V: 0.8 kVA

Exposure time : from 0.08 to 3.2 seconds

Weight : 28 kg (X-ray head : 8 kg)

Compatible with digital X-ray systems

Color : dental white mat (RAL 9010)




## X-MIND DC

Intra-oral X-ray (high frequency generator)  
complete with X-ray head rectangular collimator,  
70 kV, pantograph arm, timer

59223760	£3,607.00
----------	-----------

<hr/>	
X-Mind DC Short Arm 400mm	

59223761	£3,607.00
----------	-----------

<hr/>	
X-Mind DC Standard Arm 800mm	

59223762	£3,796.00
----------	-----------

<hr/>	
X-Mind DC Long Arm 1100mm	

NS00001	£116.00
---------	---------

<hr/>	
X-Mind Spreader Plate	

## X-MIND TUBE HEADS

52123760	£1,350.00
----------	-----------

<hr/>	
X-Mind AC Tube Head - white	

53123760	£1765.00
----------	----------

<hr/>	
X-Mind DC Tube Head - white	

52123710	£1,350.00
----------	-----------

<hr/>	
X-Mind AC Tube Head - grey	

53123710	£1765.00
----------	----------

<hr/>	
X-Mind DC Tube Head - grey	





### X-MIND AC/DC MOBILE

Intra-oral X-ray (high frequency generator) complete with X-ray head rectangular collimator, 70 kV, pantograph arm, timer

59023763 £3,897.00

X-Mind AC Mobile

59223763 £3,512.00

X-Mind DC Mobile

### X-MIND AC/DC ACCESSORIES

515 001 32 £75.00

Warning light for X-MIND AC/DC timer. It is located externally, above the door of the x-ray room. It indicates no entrance with red light on

Dimensions : 13.5 x 9.5 x 8.5 cm

Total weight : 300 g

Bulb: 15W 230V (E14 22 x 48)



515 001 33 £65.00

Remote control placed outside the x-ray room. It is connected to the X-MIND AC/DC timer

Dimensions : 13.5 x 9.5 x 4cm

Total weight : 170 g



### X-MIND AC/DC ACCESSORIES

52523730 £460.00

X-Mind timer



29701197 £131.00

Long cone (31 cm DFP)



29701199-C £165.00

Rectangular cone, rotating (31 cm DFP)



29701028-C £53.00

Exposure Switch



29700458 £36.00

Tie Rod Holder

### Important

X-Mind AC and DC X-Rays are delivered with a rectangular collimator as standard. A long cone can be purchased on part number 29701197 for £131.00 RRP

**X-MIND AC/DC SPARE PARTS**

29707006-C £452.00  
Soft Positioner DC

29707813-C £472.00  
Soft Positioner AC



39700305 £13.00  
Key and Barrel for X-Mind timer

39700384 £66.00  
Wiring Loom for AC soft position

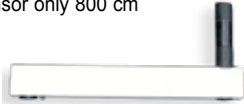
39700381 £66.00  
Wiring Loom for DC soft position

**EXTENSION ARMS ONLY**

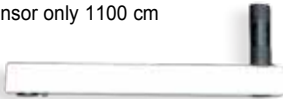
29700380-C £232.00  
Short Arm Extensor only 400 cm



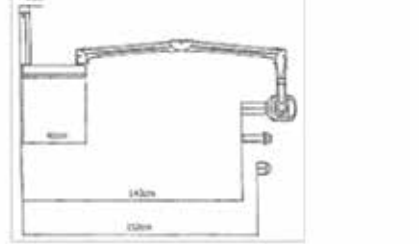
29700378-C £232.00  
Standard Arm Extensor only 800 cm



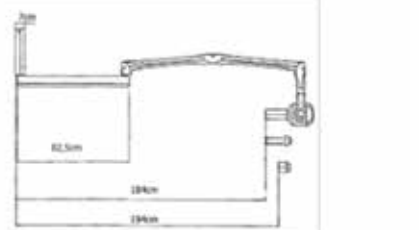
29700379-C £232.00  
Long Arm Extensor only 1100 cm



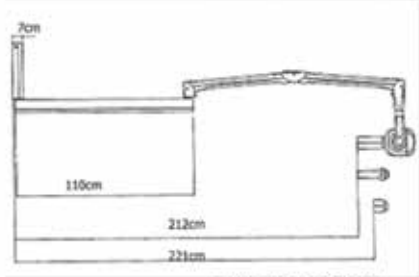
**X-MIND AC/DC OVERALL DIMENSIONS**



SHORT BRACKET 41 cm



STANDARD BRACKET 82.5 cm



LONG BRACKET 110 cm

**Important**

X-Mind AC and DC X-Rays are delivered with a rectangular collimator as standard. A long cone can be purchased on part number 29701197 for £131.00 RRP



# Veterinary Equipment

sopro  
imaging  
VET



**UBICAM**  
digital diagnostic cameras



S\_181\_0012 £6,364.00

UBIPACK VET

Camera Ubicam, one licence SOPRO Imaging Premium, Ubiled, lighth cable, 3 instruments and a vetscope.



S\_181\_0013 £1,624.00

UBICAM

USB2 stand alone solution, 1/3" CCD, NTSC, C-Mount.

## VETERINARY EQUIPMENT

F 24 487 £1,485.00

COCOON VETERINARY with spray

Delivered with an AV40 micro-motor + external spray cord, a motor holder, an autoclavable Suprasson handpiece, a handpiece holder and a n.1 tip



## VETERINARY ACCESSORIES

F 00 256 £92.00

Dog Calculus Probe L:102



F 00 258 £92.00

Dog Calculus Probe L:156



F 00 257 £92.00

Cat Calculus Probe



F 00 051 £121.00

Pressurised water bottle, Pump, male connector



F 24 417 £315.00

Cacoon Cart



## VETERINARY X-RAY EQUIPMENT

59223183

£2,784.00

Mobile Veterinary X-Ray

DC X-Ray is delivered with a Veterinary timer and a round collimator



59223761-VET

£3,606.00

DC Veterinary X-Ray

DC X-Ray is delivered with a Veterinary timer and a round collimator



59023761-VET

£3,163.00

AC Veterinary X-Ray

AC X-Ray is delivered with a Veterinary timer and a round collimator



## X-Mind 3D

The X-Mind 3D's flat-panel sensor offers superior image quality due to its large dynamic range, better contrast and lack of image distortion. Combining low dose, fast imaging and high diagnostic accuracy, the X-Mind 3D is a robust system designed for intensive use and the ClearTouch control panel makes operation simple.

X-Mind 3D shown with  
Cephalometric option

# 3D DIGITAL IMAGING MADE EASY

**Cone Beam 3D and  
digital panoramic  
imaging combined  
in one system.**

The X-Mind 3D's excellent signal-to-noise ratio, high resolution and wide dynamic range provide superior image quality and true diagnostic value for panoramic and advanced 3D imaging.



Dynamic Cone Beam  
3D Imaging with two  
fields of views (FOV's)  
and two user-selectable  
resolutions.



# Scanners and OPC's





# DIGORA® Optime



900267 £9,700.00

Optime 2 UV

## STANDARD IMAGING PLATES



200850 £397.00

Set of mixed sizes

STD IP-SET 2X SIZE 0, 2X SIZE 1, 4X SIZE 2, 2X SIZE 3

900199 £263.00

STD IP-SET SIZE 0 x 6 Pcs

900200 £263.00

STD IP-SET SIZE 1 x 6 Pcs

900201 £263.00

STD IP-SET SIZE 2 x 6 Pcs

900202 £263.00

STD IP-SET SIZE 3 x 6 Pcs

## I-DOT IMAGING PLATES



900204 £348.00

IDOT IP-SET SIZE 0 x 6 Pcs

900205 £348.00

IDOT IP-SET SIZE 1 x 6 Pcs

900206 £348.00

IDOT IP-SET SIZE 2 x 6 Pcs

900207 £348.00

IDOT IP-SET SIZE 3 x 6 Pcs

## DIGITAL PLATE SYSTEMS



900313 £7,600.00

Optime Eco

## PROTECTIVE PLASTIC BAGS



9802385 £47.00

DISP PLASTIC BAGS SIZE 0 x 250 Pcs

9802386 £47.00

DISP PLASTIC BAGS SIZE 1 x 250 Pcs

9802387 £78.00

DISP PLASTIC BAGS SIZE 2 x 500 Pcs

9802388 £47.00

DISP PLASTIC BAGS SIZE 3 x 200 Pcs

## OPTI - BAGS



900183 £46.00

OPTI - BAG SIZE 0 x 200 Pcs

900184 £46.00

OPTI - BAG SIZE 1 x 200 Pcs

900185 £46.00

OPTI - BAG SIZE 2 x 200 Pcs

900186 £46.00

OPTI - BAG SIZE 3 x 200 Pcs

## PROTECTIVE COVERS



9802752 £29.00

BITE COVERS SIZE 0 x 250 Pcs

9802753 £29.00

BITE COVERS SIZE 1 x 250 Pcs

9802754 £29.00

BITE COVERS SIZE 2 x 250 Pcs

9802755 £29.00

BITE COVERS SIZE 3 x 250 Pcs

## ACCESSORIES

9890124 £106.00

Image Plate Holder - Kwik Holder



9890218 £129.00

Image Plate Holder - Super Bite 2 Ant 2 Post

9890219 £129.00

Image Plate Holder - Super Bite 4 Ant

9890220 £129.00

Image Plate Holder - Super Bite 4 Post



6811305 £29.00

Image Plate Collector



9802541 £50.00

Image Plate Storage Box - Holds Various Sizes  
(Plates not included)



900667 £29.00

OPTIWIPE™ IMAGING PLATE CLEANING WIPES

Ethanol (EtOH) 82%

Chlorhexidine Diguconate 0,5%



900335 £372.00

Comfort Occlusal Start-up kit includes ;  
25pcs Bite protector 4C Comfort Occlusal  
25pcs Hygine bag 4C Comfort Occlusal  
50pcs Protective cover size 3  
2pcs Size 3 imaging plates  
Quick guide for Comfort Occlusal

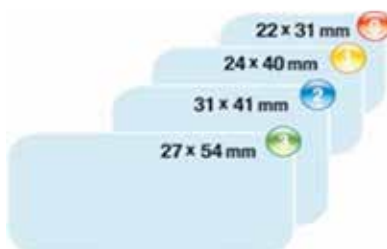


900320 £319.00

Comfort Occlusal Accessory kit includes ;  
25pcs Bite protector 4C Comfort Occlusal  
25pcs Hygine bag 4C Comfort Occlusal  
50pcs Protective cover size 3  
Quick guide for Comfort Occlusal  
NO IMAGING PLATES



## IMAGE PLATE SIZES



**X-MIND PANO**

10000061                      £14,276.00

X-Mind Pano 3 Non-Digital OPG

10000062                      £20,440.00

X-Mind Pano 3 Non-Digital OPG with Ceph

**X- MIND PANO D+**

40000003-A                      £24,415.00

X-Mind Pano D+

40000003-B                      £26,686.00

X-Mind Pano D+ with Ceph Sensor

40000004L                      £32,931.00

X-Mind Pano D+ with Ceph (1 Sensor) LEFT

40000004R                      £32,931.00

X-Mind Pano D+ with Ceph (1 Sensor) RIGHT

40000004-L-SAT-B              £42,719.00

X-Mind Pano D+ with Ceph (2 Sensors) LEFT

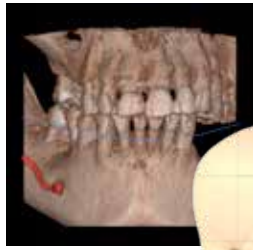
40000004-R-SAT-B              £42,719.00

X-Mind Pano D+ with Ceph (2 Sensors) RIGHT

**NOVUS**

50000001                      £22,145.00

Novus Digital OPG

**X- MIND 3D****TRADITIONAL 2D SYSTEMS**

900530 X-Mind 3D Panaramic £POA  
 with panaramic sensor  
 with cephalometric sensor

900531 X-Mind 3D Panaramic Ceph £POA  
 with cephalometric sensor  
 with dual sensor, pan and ceph

**3D SYSTEM**

900532 Panaramic 3D £POA  
 XS FOV + panoramic sensor  
 XS +Midi FOV + panoramic sensor  
 XS FOV + cephalometric sensor  
 XS +Midi FOV + cephalometric sensor

900532 Panaramic 3D Ceph £POA  
 XS FOV + cephalometric sensor  
 XS +Midi FOV + cephalometric sensor  
 XS FOV + cephalometric sensor  
 XS +Midi FOV + cephalometric sensor

900448 £POA  
 Workstation PC

206908 £POA  
 Exhibition Stand

**SOFTWARE OPTIONS**

900345 £POA  
 OnDemand 3D Dental

900343 £POA  
 OnDemand 3D Application

**WARRANTY**

Extended Warrenty Option  
 Warranty 3 years  
 Warranty 5 years

Sensors £POA  
 Panoramic Sensor  
 Cephalometric Sensor  
 3D S Sensor (XS FOV Included)

Upgrade Prices £POA  
 Cephalometric without sensor  
 Cephalometric with sensor  
 3D option upgrade for traditional with 3D sensor

## CONE BEAM 3D SYSTEMS

82

SCANNERS AND OPG'S



### SCANORA 3D

60000001	Scanora 3D	£POA
Scanora 3D System (upholstrey colour Red or Blue) OnDemand 3D visualization software, Primary licence 3 FOV (small, medium, large) SCANORA software, multi user Manuals 1 Year Warranty		

60000002	Scanora 3D Panoramic	£POA
Scanora 3D System (upholstrey colour Red or Blue) Panoramic CCD Sensor assembly OnDemand 3D visualization software, Primary licence 3 FOV (small, medium, large) SCANORA software, multi user Manuals 1 Year Warranty		



### WHITE FOX

70223101	WhiteFox Self Standing 230V	£POA
70023102	WhiteFox Wall Mounting 230V	£POA
70015103	WhiteFox Self Standing 115V	£POA
70015104	WhiteFox Self Standing 230V	£POA
Standard Configuration WhiteFox CBCT scanner Calibration Phantoms Workstation PC with standard monitor WhiteFox Imaging software with 1+4 licences Installation manual and user manuals 2 year standard warranty		

**For Prices of accessories, spare parts, options, upgrade kits and software:**

Please Contact Acteon UK directly for prices on all 3D X-Ray units, accessories on;

Email; [info@acteongroup.co.uk](mailto:info@acteongroup.co.uk) / [sales@acteongroup.co.uk](mailto:sales@acteongroup.co.uk) Tel; + (00) 44 01480 477307

*Classic*  
By **RISKONTROL®**



83



# Hygiene / Riskontrol





#### Disposable tips for the multifunction syringe

The risk of direct or cross-contamination is consequently eliminated, as well as the risk of microbial migration in the unit's air and water circuits. RISKONTROL ensures your patient's and your own protection.

The RISKONTROL range includes almost 70 different adapters able to equip 145 types of instrument delivery systems.

The adapter is left permanently in place.

You just need to change syringe tips after each patient.

Adapters are delivered with two protective caps and, depending on the type, a replacement O-ring to ensure optimal functioning of your syringe.

#### Composition

RISKONTROL syringe tips are made from entirely recyclable food-quality plastic. This material is environmentally friendly and non-polluting in the case of combustion.



Riskontrol Art dispenser box with 250 pcs £42.00

201 701 mandarin £42.00



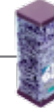
201 702 Liquorice £42.00



201 703 aniseed £42.00



201 704 blackcurrant £42.00



201 700 menthol £42.00



Riskontrol Art,  
non sterile tips - with 5 colors, 5 fragrances

*Classic*  
By **RISKONTROL®**



Riskontrol dispenser box with 250 pcs £42.00

- 201 664 **non sterile tips** - white
- 201 665 **non sterile tips** - blue
- 201 666 **non sterile tips** - yellow
- 201 667 **non sterile tips** - green
- 201 668 **non sterile tips** - pink

**Adapter** £37.00  
in blister packs  
(see the list of all adapters on page 86-87)

**Total Protec**  
By **RISKONTROL®**



Riskontrol Total Protec, syringe tip with plastic sheath for air/water syringe. Flexible sheath in polyethylene. Length of 55 cm to wholly cover the metallic air/water syringe is fully realized. Fully achieved protection of the patients from cross contamination.

Riskontrol Total Protec of 100 pcs. £26.00

- 201 751 **with plastic sheath** - White
- 201 750 **with plastic sheath** - Blue

**Sterile**  
By **RISKONTROL®**



Riskontrol Box with 100 pcs £25.00

- 200 250 **sterile tips** - white
- 201 770 **sterile tips** - blue
- 200 265 **sterile tips** - green



# RISKONTROL®

Most common syringes and Riskontrol corresponding adapters  
For a complete list of the Riskontrol adapters available (67 types) see the Riskontrol technical catalog



**ADEC II**

Reference  
Pierre Rolland  
203880

**ADEC**



**BELMONT NEW**

Reference  
Pierre Rolland  
203873

**BELMONT**



**Castellini  
Logo**

Reference  
Pierre Rolland  
203884

**CASTELLINI**



**Castellini  
Logo New**

Reference  
Pierre Rolland  
203977



**Castellini V**

Reference  
Pierre Rolland  
203889

**CASTELLINI**



**CEFLA  
Dental**

Reference  
Pierre Rolland  
203978

**CEFLA DENTAL**



**DCI**

Reference  
Pierre Rolland  
203906

**DCI**



**DENTALEZ**

Reference  
Pierre Rolland  
203898

**DENTALEZ**



**FA C**

Reference  
Pierre Rolland  
203903



**FA C2**

Reference  
Pierre Rolland  
203904

**FARO**



**FA S1**

Reference  
Pierre Rolland  
203972



**Flex**

Reference  
Pierre Rolland  
203907

**FLEX**



**Holland  
Dental**

Reference  
Pierre Rolland  
203910

**HOLLAND DENTAL**



**Kavo C**

Reference  
Pierre Rolland  
203913



**Kavo DB**

Reference  
Pierre Rolland  
203970

**KAVO**



**Kavo E**

Reference  
Pierre Rolland  
203915

\*Numbers for the KAVO syringes

# RISKONTROL®

Most common syringes and Riskontrol corresponding adapters

For a complete list of the Riskontrol adapters available (67 types) see the Riskontrol technical catalog



**Kavo GB**  
Reference  
Pierre Rolland  
203971



**Kavo HB**  
Reference  
Pierre Rolland  
203968



**Kavo J**  
Reference  
Pierre Rolland  
203966



**Kavo K**  
Reference  
Pierre Rolland  
203877

**KAVO**



**LU Inox**  
Reference  
Pierre Rolland  
203870



**LU V**  
Reference  
Pierre Rolland  
203920



**LU New**  
Reference  
Pierre Rolland  
203979



**Morita 66  
Type 2**  
Reference  
Pierre Rolland  
203875

**LUZZANI**

**MORITA**



**Morita S12**  
Reference  
Pierre Rolland  
203973



**Ritter  
Topjet**  
Reference  
Pierre Rolland  
203933



**Sirona B**  
Reference  
Pierre Rolland  
203975



**Siemens  
2000**  
Reference  
Pierre Rolland  
203938

**MORITA**

**RITTER COMBIJET**

**SIRONA / SIEMENS**



**Siemens  
4000**  
Reference  
Pierre Rolland  
203939



**Yoshida III**  
Reference  
Pierre Rolland  
203926

**SIRONA / SIEMENS**

**YOSHIDA**



\*Numbers for the KAVO syringes

PIERRE ROLLAND  
**ACTEON**

> other adapters are available on request

## SULCUS BLUE™



### GINGIVAL RETRACTION AND HEMOSTASIS

246 300 £117.00

Sulcus Blue

The adhesive property of Sulcus Blue on the mucous, allows intimate contact with the soft tissues. The astringent powder of Aluminium chloride is facilitated.

- Hemostasis achieved in seconds.
- In 2 minutes, ensures perfect gentle sulcular opening.
- perfectly dry, accessible prep area, ideal for quality impressions, restorations or cementations under ideal conditions.

## HYCAL™



### ROOT CANAL ANTISEPSIS

259 304 £41.00

Hycal

Root Canal Antisepsis

Calcium hydroxide-based aqueous preparation

An endodontic treatment dressing of multi-purposes

- Root canal antisepsis between sessions
- Root repair
- Direct or indirect pulp capping

## MTA\* CAPS



### ROOT CANAL REPAIR MATERIAL

251 160 Caps £35.00

MTA Caps

213 655 Caps Gun £122.00

MTA Caps Gun

It is the first restorative material that consistently allows for the overgrowth of cementum, and it may facilitate the regeneration of the periodontal ligament.

MTA, is a new biocompatible material introduced by Mohmoud Taorabinejad with numerous exciting clinical applications in Endodontics.

Acteon UK

Contact Information

# Acteon UK Contact Details

## Managing Director

**Derek Hampton** *Managing Director*

---

Tel: +44 (0) 1480 477 307 opt 1  
 Fax: +44 (0) 1480 477 381  
 Email: [derek.hampton@acteongroup.co.uk](mailto:derek.hampton@acteongroup.co.uk)

## Internal Sales team

**Cherie Hampton** *Office Manager*

---

Tel: +44 (0) 1480 477 307 opt 1  
 Fax: +44 (0) 1480 477 381  
 Email: [cherie.hampton@acteongroup.co.uk](mailto:cherie.hampton@acteongroup.co.uk)

**Marianne Maguire** *Internal Accounts Manager*

---

Tel: +44 (0) 1480 477 307 opt 1  
 Fax: +44 (0) 1480 477 381  
 Email: [marianne.maguire@acteongroup.co.uk](mailto:marianne.maguire@acteongroup.co.uk)

## Accounts team

**Deniz Brown** *Finance Manager*

---

Tel: +44 (0) 1480 477 307 opt 3  
 Fax: +44 (0) 1480 477 381  
 Email: [deniz.brown@acteongroup.co.uk](mailto:deniz.brown@acteongroup.co.uk)

**Pauline Black** *Accounts Assistance*

---

Tel: +44 (0) 1480 477 307 opt 3  
 Fax: +44 (0) 1480 477 381  
 Email: [pauline.black@acteongroup.co.uk](mailto:pauline.black@acteongroup.co.uk)

## Service team

**Alan De'Ath** *Service Manager*

---

Tel: +44 (0) 1480 477 307 opt 2  
 Fax: +44 (0) 1480 477 381  
 Email: [alan.d@acteongroup.co.uk](mailto:alan.d@acteongroup.co.uk)

**Garry Boon** *Service Engineer*

---

Tel: +44 (0) 1480 477 307 opt 2  
 Fax: +44 (0) 1480 477 381  
 Email: [garryw.boon@acteongroup.co.uk](mailto:garryw.boon@acteongroup.co.uk)

## Digital Team

**Jonathan Hampton** *Digital Product Manager*

---

Tel: +44 (0) 1480 477 307 opt 1  
 Fax: +44 (0) 1480 477 381  
 Mobile: +44 (0) 7980 280 739  
 Email: [jonathan.hampton@acteongroup.co.uk](mailto:jonathan.hampton@acteongroup.co.uk)

**Kevin Allan** *Digital Imaging Specialist*

---

Tel: +44 (0) 1480 477 307 opt 1  
 Fax: +44 (0) 1480 477 381  
 Mobile: +44 (0) 7981 981072  
 Email: [kevin.allan@acteongroup.co.uk](mailto:kevin.allan@acteongroup.co.uk)

**Paula Bingham** *Digital Co-ordinator*

---

Tel: +44 (0) 1480 477 307 opt 1  
 Fax: +44 (0) 1480 477 381  
 Email: [paula.bingham@acteongroup.co.uk](mailto:paula.bingham@acteongroup.co.uk)



